



উপজেলা পরিচালন ও উন্নয়ন প্রকল্প

Upazila Governance and Development Project (UGDP)
Local Government Division
Ministry of Local Government, Rural Development & Cooperatives

Result of the 6th Performance Assessment: 2021-22

The Government of Bangladesh has been implementing the Upazila Governance and Development Project (UGDP) with a loan supported by the Government of Japan through JICA. The project aims to strengthen Upazila Parishad (UZP), which was revitalized in 2009 and is expected to play a critical role in rural development with good Local Governance. UGDP aims to enhance the service delivery to citizens by providing training programs and fund transfers for development activities to UZP, thereby reinforcing the Local Government structure of Bangladesh. The project period is from December 2015 to December 2024.

Toward the objective, UGDP provides development funds as the Performance-Based Allocation (PBA) to target Upazilas combined with capacity development support to all Upazilas. The size of PBA is on average 50 Lac (5 million) Taka per Upazila per fiscal year. The target Upazilas were planned to be expanded in each assessment from 100, 200, 300, 400 and up to all 492 Upazilas based on the Governance Performance Assessment (PA) results. Upazilas are basically assessed annually against preconditions that determine target Upazilas for acquiring PBA and ranking from the top to the last based on scores of their governance performances.

In early 2023, UGDP conducted the 6th PA, the last assessment for PBA through online modality, and selected 479 Upazilas that passed all preconditions as target Upazilas. The 6th PA is the first attempt to apply online modality, while past PAs 1 to 5 were conducted physically by sending data surveyors to all Upazilas. For the PA6 survey, UGDP slightly modified the Preconditions and Performance Indicators between PA6 and PA1-5 due to the difference in PA implementation modality with keep focusing on essential indicators. As the results, the 6th PA revealed that the Upazilas' general administration capacity in various aspects have improved substantially after the series of UGDP interventions since the 1st PA. This is realized through the joint efforts of all Upazila Stakeholders with their understanding of Upazilas' importance and their unremitting efforts for its improvement. This laudable achievements of Upazilas in their governance performance with UGDP will be outlined hereunder.

Based on the survey result, four hundred seventy-nine (479) Upazilas were selected as 6th Round target Upazilas. The selected 479 Upazilas are entitled to receive Performance Based Allocation (PBA) from UGDP. The primary size of PBA for each target Upazila will be 40 lac (4 million) taka, but Project Management Unit (PMU) will provide additional allocation to high-performing Upazilas after receiving the recommendation of Allocation Committee.

The 6th Performance Assessment required about a year for its preparation, including the consideration of indicators and online system development. The actual assessment process began in September 2022 with training for Upazila Development Facilitators (UDFs) dispatched by UGDP, and took approximately 7 months until the results were available in March 2023. Data Verification was outsourced to Development Technical Consultants Pvt. Ltd (DTCL) and performed jointly with them. The following figure 1 shows the implement procedure of PA6:

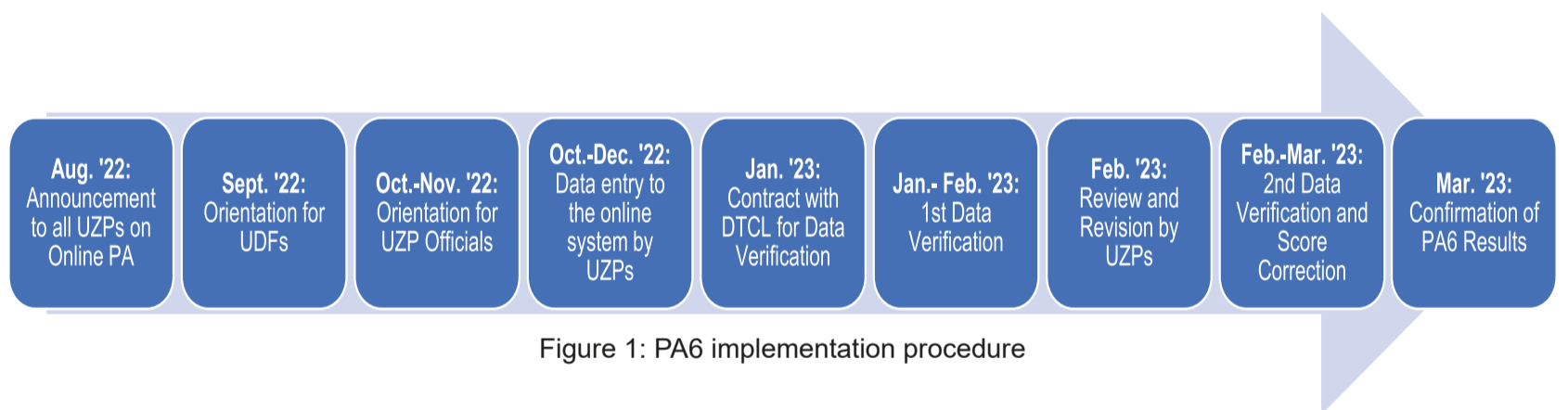
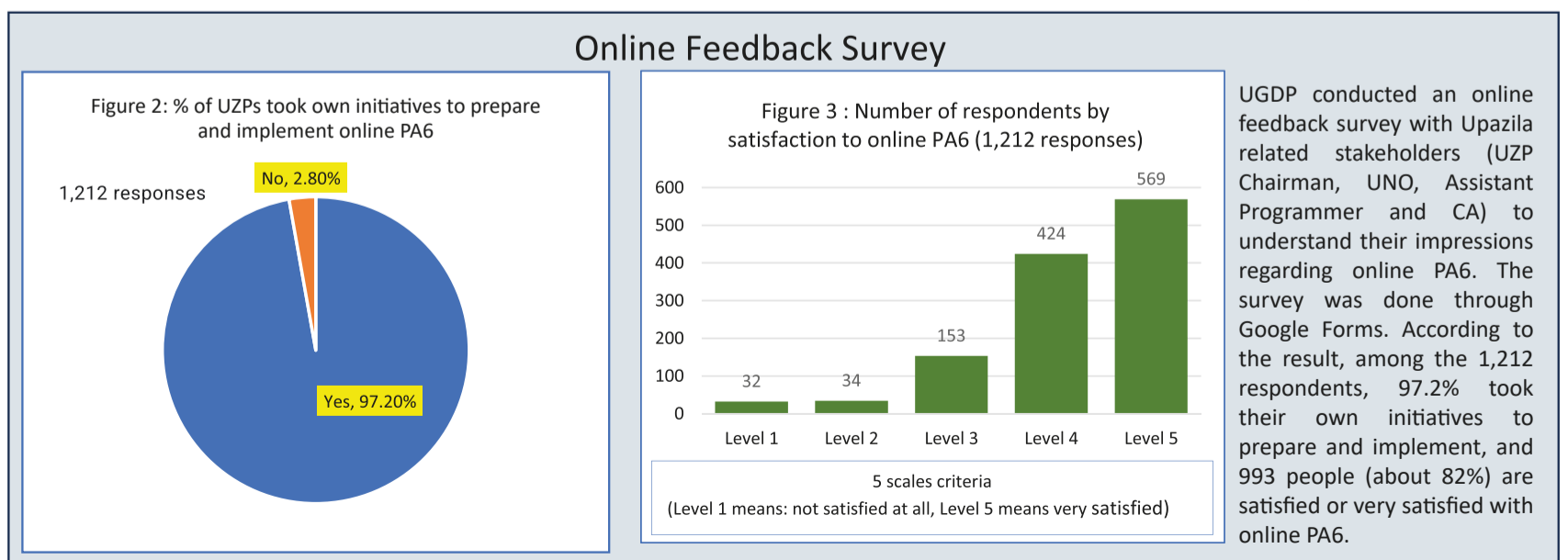


Figure 1: PA6 implementation procedure



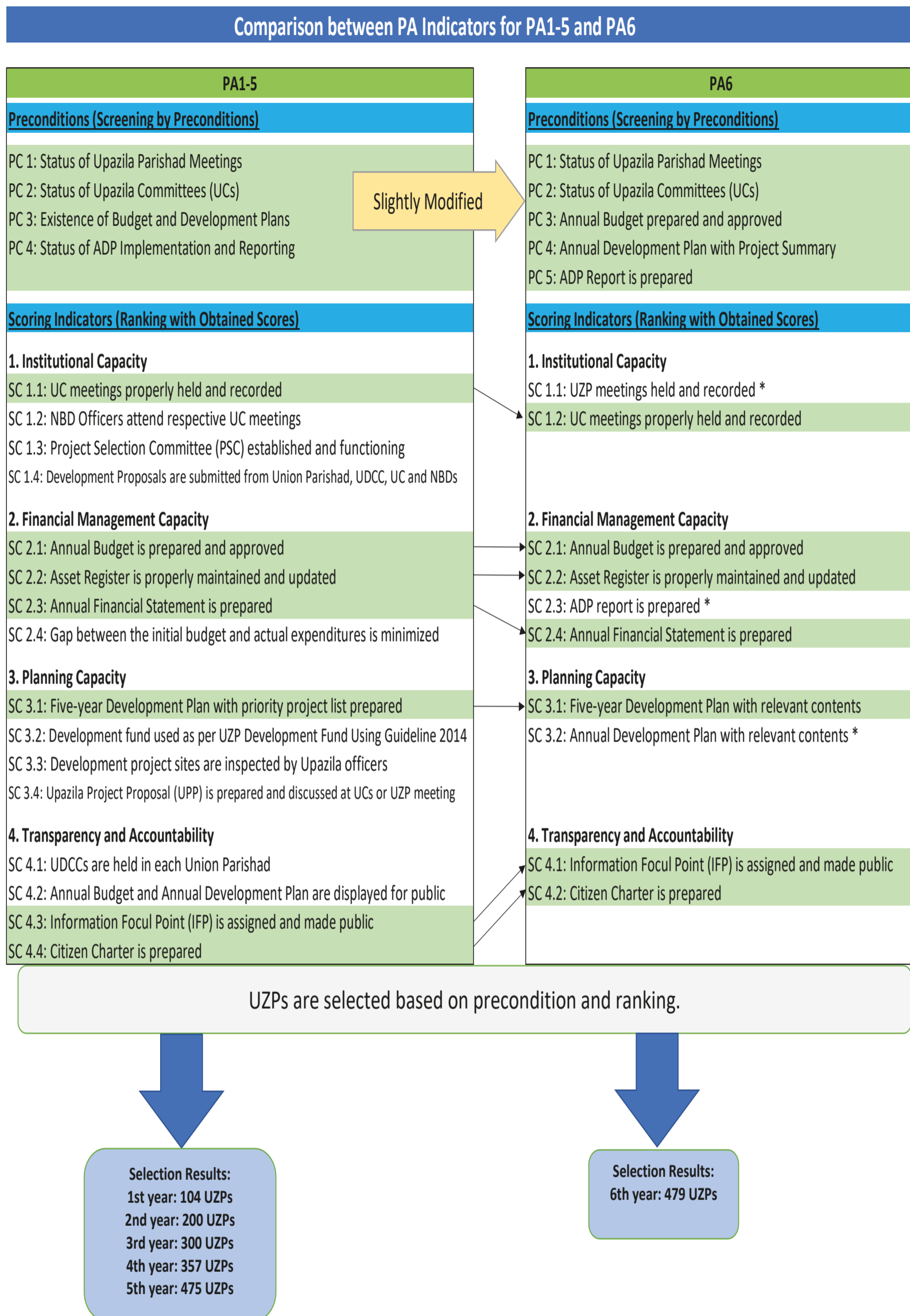


Figure 4: Performance Assessment System under UGDP

* These Scoring Indicators are newly added in PA6 to measure the degree of abidance by related rules/regulations with scores, while all these are relevant Precondition Indicators.

Note: For the PA6 survey, UGDP slightly modified the Preconditions and Performance Indicators between PA6 and PA1-5 due to the difference in PA implementation modality and also focused on essential indicators.

| Table 1: Comparison of Precondition details between PA1-5 and PA6 | | | | | |
|---|--|---|--|---|---|
| PA1-5 | | | PA6 | | |
| Precondition Indicators | Means of Verification | Minimum Passing Criteria | Precondition Indicators | Means of Verification | Minimum Passing Criteria |
| 1. Status of Upazila Parishad meetings | | | 1. Status of Upazila Parishad meetings | | |
| 1.1. Upazila Parishad (UZP) meeting are held regularly | Minutes of UZP meetings | 9 or more meetings in assessed fiscal year (FY) 6 or more meetings for Round 5 (FY 2019-20), due to COVID-19 | 1. Upazila Parishad (UZP) meeting are held regularly | Minutes of UZP meetings of the last Fiscal Year(FY) | 9 or more meetings in FY 2021-22 |
| 1.2. UZP meetings are held with proper attendance | Attendance list of UZP meeting | Average attendance in UZP meetings is 40% or more | | | |
| 2. Status of Upazila Committees (UCs) | | | 2. Status of Upazila Committees (UCs) | | |
| 2.1. Upazila Committees (UCs) are established | Minutes of UZP meeting or other official documents | 6 or more UCs are established | 2. Upazila Committees (UCs) are functioning | Minutes of Upazila Committees (UCs) meetings | At Least one UC meeting is held in FY 2021-22 |
| 2.2. UCs are functioning | Minutes of UC meetings | At least one UC meeting is held | | | |
| 3. Existence of Budget and Development Plans | | | 3. Existence of Budget and Development Plans | | |
| 3.1. Annual Budget is prepared and approved | Annual Budget | At least one prescribed template was used in the annual budget | 3. Annual Budget is prepared and approved. | Annual Budget | Annual budget of FY 2022-23 is prepared using prescribed template. |
| 3.2. Development plan is prepared | Five-Year Plan or Annual Development Plan | Either Five-Year Plan or Annual Development Plan are prepared | 4. Annual Development plan is prepared | Annual Development Plan | Annual Development Plan/s with project summary for FY 2021-22 and/or 2022-23 are prepared |
| 4. Status of ADP Implementation and Reporting | | | 4. Status of ADP Implementation and Reporting | | |
| 4.1. ADP reports are prepared | ADP reports for the last 3 years FYs | ADP reports are stored | 5. ADP reports are prepared | ADP reports | ADP report for FY 2020-21 or 2021-22 are prepared using prescribed formats. |
| 4.2. ADP reports are sent to LGD | Copy of letter sent to LGD | At least one copy of letter is found | | | |

Note: In PA1-5, criteria for passing each precondition consists of two indicators in each. In PA6, criteria for passing each precondition made simple as independent of five preconditions.

| Table 2: Comparison of Performance Indicators with Means of Verification and Scoring Criteria | | | | | |
|---|---|--|---|---|--|
| PA1-5 | | | PA6 | | |
| Performance Indicators | Means of Verifications | Scoring Criteria | Performance Indicators | Means of Verifications | Scoring Criteria |
| 1. Institutional Capacity (7 marks for each indicator) | | | 1. Institutional Capacity (10 marks for each indicator) | | |
| NA | NA | NA | 1.1. Upazila Parishad (UZP) meetings are held and recorded (New Indicator) | Minutes of Upazila Parishad Meetings | Out of maximum 12 meetings in FY 2021-22: Meeting Minutes: Point 10: 9 or more Point 7: Between 6 and 8 Point 3: Between 4 and 5 Point 0: 3 or less than 3 |
| 1.1. Upazila Committees (UCs) meeting are properly held and recorded | 1) Notice for UC meetings or decision of fixed dates of UC meetings 2) Minutes of UC meetings | Out of maximum 102 meetings: 1) Notice or fixed dates: Point 3: 36 or more Point 2: Between 24 and 35 Point 1: Between 12 and 23 Point 0: 11 or less And 2) For UC meetings minutes: Point 4: 36 or more Point 3: Between 24 and 35 Point 2: Between 12 and 23 Point 1: Between 6 and 11 Point 0: 5 or less | 1.2. Upazila Committee (UCs) meetings are held and recorded (Same as PA1-5: 1.1) | Minutes of Upazila Committee meetings | Out of maximum 102 meetings in FY 2021-22: Meeting Minutes Point 10: 36 or more Point 8: Between 24 and 35 Point 5: Between 12 and 23 Point 3: Between 1 and 11 Point 0: 0 |
| 1.2. Nation Building Department (NBD) Officers attend respective Upazila Committee meetings | 1) Attendance lists of UC meetings during FY 2019-20 | Out of maximum 204 NBD Officer attendance: Point 7: 72 or more Point 5: Between 48 and 71 Point 4: Between 24 and 47 Point 3: Between 12 and 23 Point 2: Between 6 and 11 Point 0: 5 or less | NA | NA | NA |
| 1.3. Project Selection Committee (PSC) established and functioning | 1) Minutes of PSC meetings 2) PSC's recommendations to UPZ meetings 3) Official documents of authorized persons | Timing of PSC's approval of priority projects: Point 7: 1 January to 30 June 2020 Point 5: 1 to 31 July 2020 or 1 November to 31 December 2019 Point 4: 1 August 30 September 2020 or 1 September to 31 October 2019 Point 3: 1 October to 31 December 2020 Point 2: Earlier than 31 August 2019 or date of approval cannot be confirmed Point 0: If no documentation or never held | NA | NA | NA |
| 1.4. Development proposals are submitted from Union Parishad, UDCC, UCs and NBDs | 1) Number of proposals from various sources (Unions, UDCC, UCs, NBDs and "Others") | Proposals from Others (e.g. local elites, etc.): Point 7: No proposal from others Point 5: 5% or less Point 4: 6% to 10%, Point 3: Between 11% and 20% Point 0: 21% or more or no proposal | NA | NA | NA |
| 2. Financial Management Capacity (7 marks for each indicator) | | | 2. Financial Management Capacity (10 marks for each indicator) | | |
| 2.1. Annual Budget is prepared and approved as stated in UZP Act. | 1) Minutes of UZP meetings (Date of final approval by Upazila Parishad) FY 2020-21 | Timing of Budget Approval: Point 7: Before 31 May 2020 Point 5: 1 to 30 June 2020 Point 4: 1 to 31 July Point 3: 1 August to 30 September 2020 Point 2: Earlier than 30 June 2019 or later than 1 October 2020 or date cannot be confirmed Point 0: No budget | 2.1. Annual Budget is prepared and approved as stated in UZP Act (Same as PA1-5: 2.1) | Budget/Minutes of UZP meetings (Data of final approved by Upazila Parishad) in FY 2022-23 | Timing of Budget Approval: Point 10: Before 31 May Point 8: 1 to 30 June 2022 Point 6: 1 to 31 July 2022 Point 4: 1 August to 31 September 2022 Point 2: Later than 1 October or date not confirmed Point 0: No budget |
| 2.2. Asset Register is properly maintained and updated | 1) Asset Register (for immovable and movable assets) | Asset Register: Point 7: Asset Registers for both immovable & movable assets are updated during FY 2019-20 Point 6: Asset Registers for both immovable & movable assets created Point 5: Either Asset Registers for movable property or Asset Registers for immovable | 2.2. Asset Register is properly maintained and updated (Same as PA1-5: 2.2) | Asset Register (for immovable and movable assets) | Asset Register: Point 10: Asset Register for both immovable and movable assets are updated during FY 2021-22 Point 8: Asset Register for both immovable and movable assets created Point 5: Either Asset Register for immovable property or movable property updated during FY 2021-22 |

| | | | | | |
|--|--|--|--|---|---|
| | | property updated during FY 2019-20 Point 4: Either Asset Registers for movable or immovable property created Point 0: No Asset Registers | | | Point 3: Either Asset Register for immovable or movable created Point 0: No Asset Register |
| NA | NA | NA | 2.3. ADP reports are prepared (New Indicator) | ADP reports of FY 2020-2021 or 2021-2022 | ADP reports are prepared using prescribed format: Point 10: ADP report of FY 2021-22 has already been prepared Point 8: Report of FY 2020-21 has prepared before 31 August 2021 Point 6: Report of FY 2020-21 has prepared before 1 September 2021 Point 3: Report of FY 2020-21 has prepared but time not mentioned Point 0: ADP report not prepared |
| 2.3. Annual Financial Statement is prepared | 1) Annual Financial Statement for FY 2018-19 2) Minutes of UZP meeting on approval of Financial Statement | Date of Financial Statement approval: Point 7: Before 31 December 2019 Point 5: 1 to 31 January 2020 Point 4: 1 to 28 February 2020 Point 3: 1 to 31 March 2020 Point 2: On and after April 2020 or date cannot be confirmed Point 0: No Financial Statement | 2.4. Annual Financial Statement is prepared (Same as PA1-5: 2.3) | Annual Financial Statement for FY 2020-21 | Date of Financial Statement approval: Point 10: Before 31 December 2021 Point 8: 1 to 31 January 2022 Point 6: 1 to 28 February 2022 Point 4: 1 to 31 March 2022 Point 2: On and after April 2022 or date cannot be confirmed Point 0: No Financial Statement |
| 2.4. Gap between the initial budget and the actual expenditure is minimized | 1) Annual Budget (initial) FY 2019-20 (Comparison of initial budget and actual expenditure) | Calculation of Gap (%): Point 7: Gap is +/- 15% or less Point 5: Gap is +/-16 to 20% Point 4: Gap is +/-21 to 25% Point 3: Gap is +/-26 to 30% Point 1: Gap is +/-31 or more Point 0: If comparison cannot be made | NA | NA | NA |
| 3. Planning and Budgeting Capacity (7 marks for each indicator) | | | 3. Planning and Budgeting Capacity (10 marks for each indicator) | | |
| 3.1. Five-Year Development Plan with priority project list is prepared | 1) Five-Year Development Plan Book | Five-Year Development Plan Book including FY 2019-2020 or 2020-2021 or both, then: Point 7: Both sector wise and union wise lists Point 5: Either sector wise or union wise list Point 3: Five-Year Plan exist but no sector wise and union wise lists Point 0: No Five-Year Plan | 3.1. Five Year Development Plan with relevant contents is prepared (Same as PA1-5: 3.1) | Five Year Development Plan Book | Five Year Development Plan Book including FY 2022-23: Point 10: Included 6 relevant contents Point 8: Included 4 and 5 relevant contents Point 5: Included 3 relevant contents Point 3: Included 1 and 2 relevant contents Point 1: No relevant content is included Point 0: No Five Year Plan |
| NA | NA | NA | 3.2. Annual Development Plan with relevant contents is prepared for FY 2021-22 or FY 2022-23 (New Indicator) | Reports and documentation on AP of FY 2021-22 or FY 2022-23 | Annual Development Plan Book of FY 2021-22 or FY 2022-23: Point 10: Included 6 or more relevant contents in ADP of FY 2022-23 Point 8: Included 6 or more relevant contents in ADP of FY 2021-22 Point 7: Included 3-5 relevant contents in ADP of FY 2022-23 Point 6: Included 3-5 relevant contents in ADP of FY 2021-22 Point 4: Included 1-2 relevant contents in ADP of FY 2022-23 Point 3: Included 1-2 relevant contents in ADP of FY 2021-22 Point 1: No relevant content is included in ADP of FY 2021-22 or FY 2022-23 Point 0: No Annual Development Plan is prepared |
| 3.2. Development Fund is used as per UZP Development Fund using Guideline 2014 | 1) ADP list and interview with Upazila Engineer | Number of sectors covered out of 11 in ADP: Point 7: 8 or more sectors Point 5: 6 or 7 sectors Point 3: 4 or 5 sectors Point 2: 3 sectors Point 0: 2 or less sector | NA | NA | NA |
| 3.3. Development Project sites are inspected by Upazila Officers | 1) Site Inspection Checklist and interview with UNO and Upazila Engineer 2) Tour diary | % Project sites inspected out of total ADP projects: Point 7: 90% or more Point 6: 80 to 89% Point 5: 70 to 79% Point 4: 60 to 69% Point 3: 50 to 59% Point 2: 40 to 49% Point 1: Less than 40% Point 0: None | NA | NA | NA |

| | | | | | |
|--|---|--|---|--|---|
| 3.4. Upazila Project Proposal (UPP) is prepared for each project and discussed at Upazila Committees or UZP meetings | 1) UPP Documents for FY 2019-20 | % of UPP prepared out of total ADP projects: Point 7: 100% Point 6: 90-99% Point 5: 80 to 89% Point 4: 70 to 79% Point 3: 60 to 69% Point 2: 50 to 59% Point 1: Less than 50% Point 0: None | NA | NA | NA |
| 4. Transparency and Accountability (4 marks for each indicator) | | | 4. Transparency and Accountability (10 marks for each indicator) | | |
| 4.1. Union Development Coordination Committee (UDCC) meetings are held in each Union Parishad | 1) UDCC meeting minutes filed at Upazila Parishad | % of UDCC meeting minutes filed in UZP out of total UDCC meetings (6 meetings per union) supposed to be held: Point 4: 80% or more Point 3: 60 to 79% Point 2: 40 to 59% Point 1: Less than 40% Point 0: None | NA | NA | NA |
| 4.2. Annual Budget and Annual Development Plan are displayed for public scrutiny on notice boards and websites | 1) Notice Board and Websites | Annual Budget and Annual Development Plan (ADP) display status: Point 4: Both Annual Budget and ADP are placed in the notice board and website Point 3: Either Annual Budget or ADP is placed in the notice board and websites Point 2: Both Budget and Plan is placed on either board or website Point 1: Either Budget or Plan is placed on either board or website Point 0: None placed | NA | NA | NA |
| 4.3. Information Focal Point (IFP) is assigned and such assignment is made public | 1) Official Documents to appoint the IFP at Notice Board and Websites | Appointment /Assignment display status: Point 4: Assignment has been displayed at either website or notice board Point 2: IFP assigned but not displayed Point 0: No IFP assigned | 4.1. Information Focal Point (IFP) is assigned and made public (Same as PA1-5: 4.3) | Official documents to appoint the IFP at website | Appointment / assignment display status at website: Point 10: Information Focal Point is appointed Point 0: Information Focal Point is not appointed |
| 4.4. Citizen Charter is prepared and publicized | 1) Citizen Charter or interview with UNO | Citizen Charter display status at Notice board/website: Point 4: Citizen Charter publicized and updated Point 2: Citizen Charter publicized but not updated Point 0: Neither Citizen Charter prepared nor published | 4.2. Citizen Charter is prepared and publicized (Same as PA1-5: 4.4) | Citizen Charter at website | Citizen Charter display status at website: Point 10: Citizen Charter is available and publicized Point 0: No Citizen Charter |

Note: In this table, corresponding indicators in PA1-5 and PA6 are arranged in the same row for clarity. Those with no related indicators are shown as NA (Not Applicable).

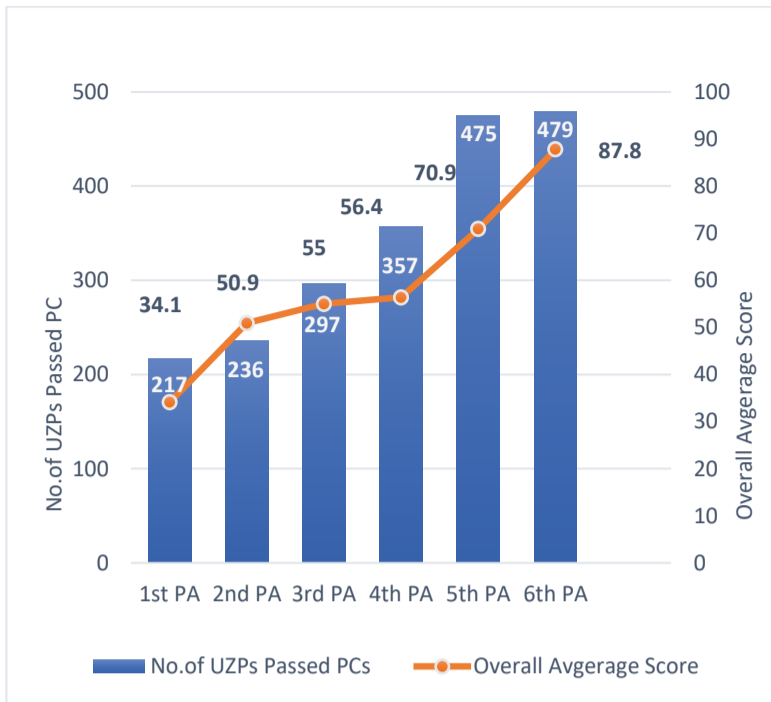
Table 3: Summary Results of the Performance Assessment (comparison of PA 1-6)

| PAAs→ | 1st PA | | 2nd PA | | 3rd PA | | 4th PA | | 5th PA | | 6th PA* | |
|--|------------|-------------------|------------|-------------------|------------|-------------------|------------|-------------------|------------|-------------------|------------|-------------------|
| Number of Sample Upazila | 488 | | 491 | | 492 | | 492 | | 492 | | 492 | |
| Preconditions (PC) | No. | % in Total | No. | % in Total | No. | % in Total | No. | % in Total | No. | % in Total | No. | % in Total |
| Number of Upazilas that passed Preconditions | 217 | 44.5% | 236 | 48.1% | 297 | 60.4% | 357 | 72.6% | 475 | 96.5% | 479 | 97.4% |
| Changes from the Previous PA (%) | | | 19 | 3.6% | 61 | 12.3% | 60 | 12.2% | 118 | 23.9% | 4 | 0.9% |
| Scores of Performance Assessment (max. 100) | | | | | | | | | | | | |
| Overall Average (Without considering PC) | 34.1 | | 50.9 | | 55.0 | | 56.4 | | 70.9 | | 87.84 | |
| Average (Upazilas that passed PC) | 45.2 | | 67.8 | | 70.9 | | 66.7 | | 72.3 | | 88.98 | |
| Average (Upazilas that not passed PC) | 25.3 | | 35.2 | | 30.9 | | 29.8 | | 33.2 | | 45.53 | |
| Highest Score Upazilas | 82 | | 88 | | 100 | | 100 | | 95 | | 100 | |
| Lowest Score | 0 | | 0 | | 0 | | 0 | | 0 | | 0 | |
| Median Score | 33 | | 53 | | 58 | | 60 | | 74 | | 90 | |

* PA6 online modality (5 Precondition and 10 Performance Indicators with maximum 10 score for each indicator)

Note: Since the performance measurement system for precondition and scoring indicators are different between PA1-5 and PA6, direct comparison between them needs to be refrained. All Tables and Figures showing the results of PA6 along that of PA1-5 in the following should be regarded just as references.

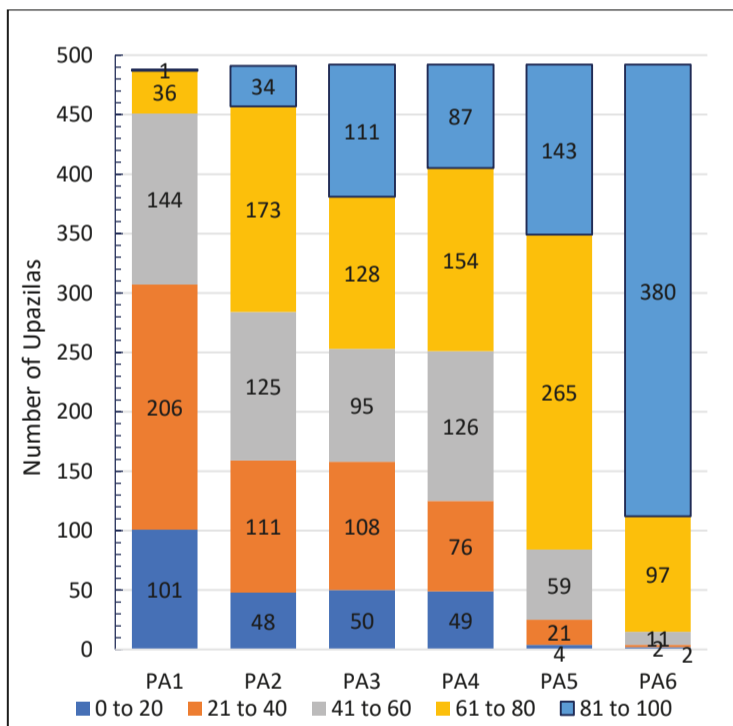
Figure 5: Numbers of PC Passed UZPs and Average Scores (PA1-PA6)



Major findings:

1. The number of Upazilas that passed preconditions have significantly increased.
2. The average scores gradually improved

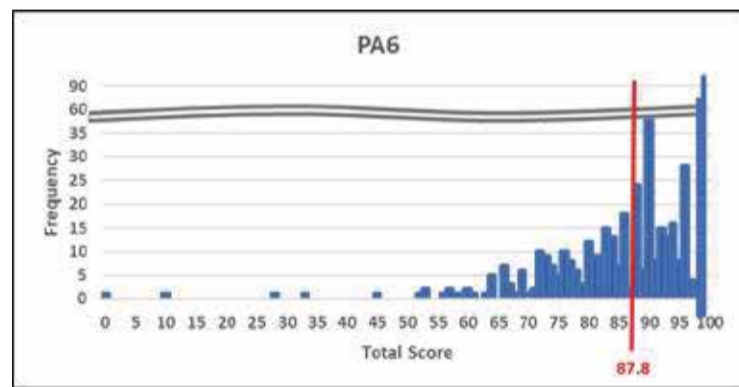
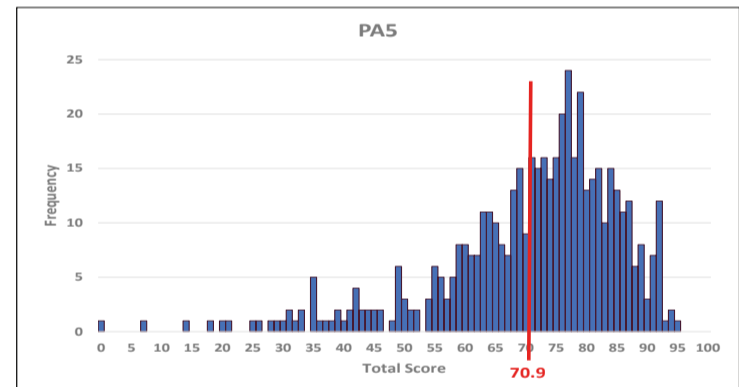
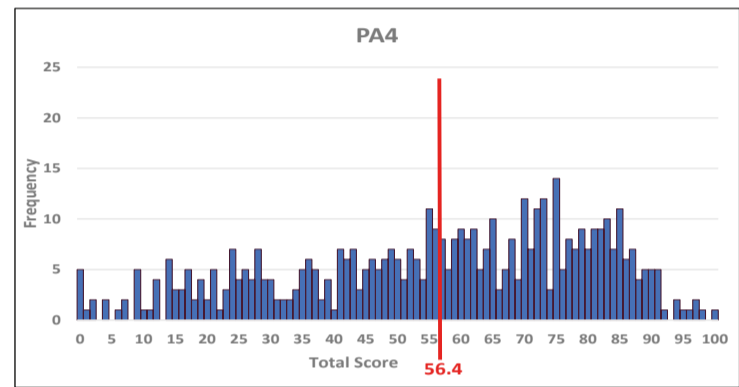
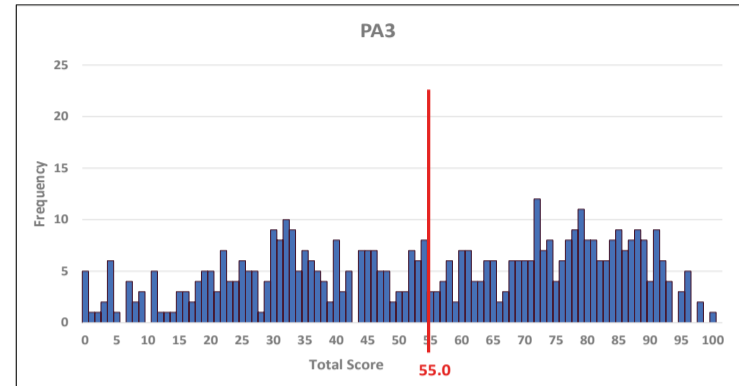
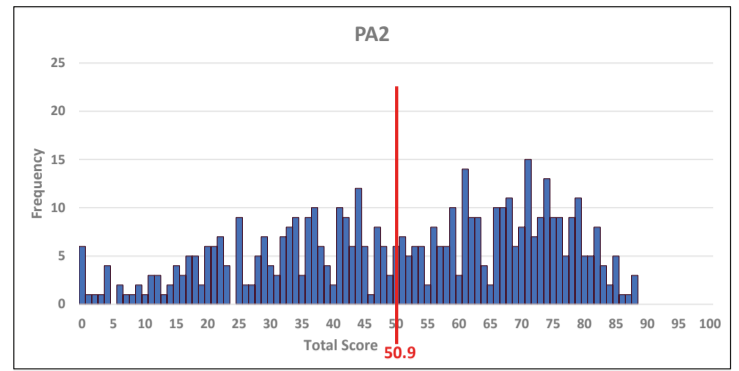
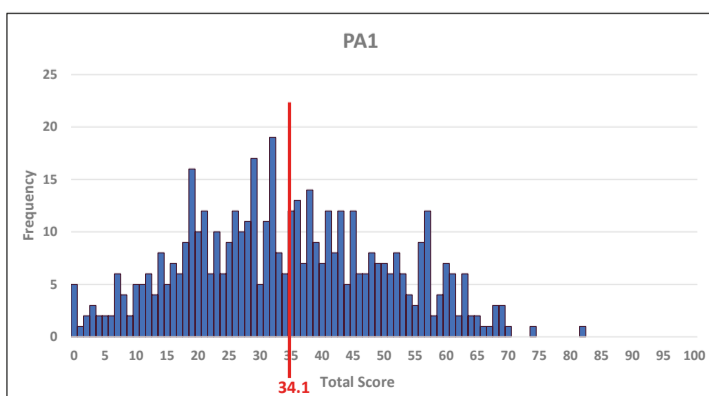
Figure 6: Number of Upazilas by Score Groups (every 20 out of 100 marks) by Performance Assessments (PAs)



Major findings:

1. The share of high performance Upazilas has increased from PA1 to PA6.
2. Accordingly, share of low performance Upazilas has decreased from PA1 to PA6.
3. Finally, in PA6, 380 (77.2%) Upazilas achieved above 80 points out of 100.

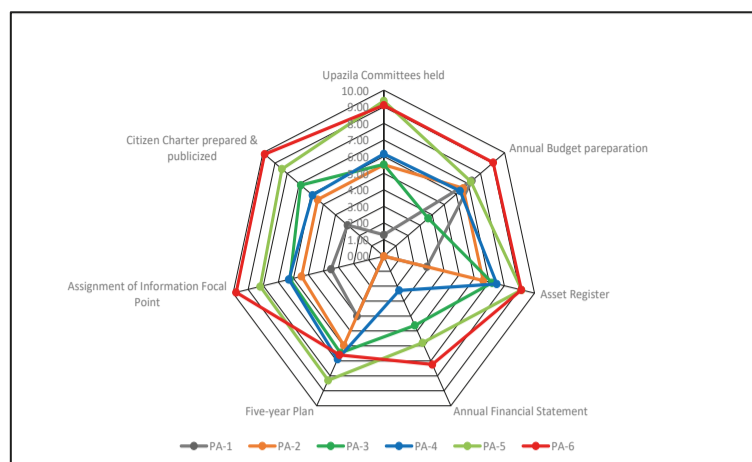
Figure 7: Transition of Score Distributions and Average of all Upazilas from PA1 to PA6



Major findings:

- In PA1, the scores of Upazilas were mostly concentrated on the left side indicating low scores. However, as the PAs progressed from PA2 to PA4, the distribution started to disperse towards the higher scores on the right side. Eventually, in PA5 and PA6, the scores shifted clearly to the higher score side.
- Even in PA6, some Upazilas remained on the left side with low scores, creating a tail-shaped distribution. It is evident that these Upazilas require special attention and interventions to address the reasons for their low scores.
- The analysis of score distribution in both PA1 and PA6 revealed a normal distribution, which is indicative of an overall improvement in the performance of nearly all Upazilas over the course of six PAs. These findings endorse the efficacy of the efforts aimed at enhancing the performance in terms of Good Governance of Upazilas.

Figure 8: Average Scores (out of 10 marks) of seven comparable Performance Indicators by Performance Assessments (PA1-PA6)



Note:

- This figure shows only 7 Performance Indicators that are directly comparable throughout the PAs.
- All seven Performance Indicators of PA1 to PA5 scores are adjusted from maximum 7 scores to 10 for comparative analysis.
- In PA6, maximum 10 score allocated for each Performance Indicators.

Major findings:

1. Scores of most Performance Indicators are improved except Five-Year Plan in PA6 compared to PA1 to PA5. This implicates the expiration of existing Five-year Plans of substantial number of Upazilas.
2. In PA6, out of seven comparable indicators, five (71%) indicators reached more than 90% scores out of 10.

Table 4: PA wise Average Scores (out of 10 marks) of Performance Indicators

| PA1-5 Ind. Sl. No. | PA6 Ind. Sl. No. | Number of Upazilas--> | 488 491 492 492 492 492 | | | | | |
|--------------------|------------------|--|-------------------------|------|------|------|------|------|
| | | | Average Score | | | | | |
| | | Performance Indicators | PA-1 | PA-2 | PA-3 | PA-4 | PA-5 | PA-6 |
| NA | 1.1 | Upazila Parishad Meeting | NA | NA | NA | NA | NA | 9.83 |
| 1.1 | 1.2 | UCs meeting are properly held and recorded | 1.29 | 5.51 | 5.53 | 6.17 | 9.36 | 9.1 |
| 1.2 | NA | NBD attendance in UC meetings | 3.43 | 6.24 | 5.31 | 6 | 8.71 | NA |
| 1.3 | NA | PSC established and functioning | 1.57 | 2.2 | 2.61 | 2.7 | 4.94 | NA |
| 1.4 | NA | Development Proposals submitted by UDCC | 4.86 | 5.77 | 3.76 | 4.1 | 6.86 | NA |
| 2.1 | 2.1 | Annual Budget prepared and approval | 7.29 | 6.57 | 3.67 | 6.31 | 7.21 | 9.05 |
| 2.2 | 2.2 | Asset Register is properly maintained & updated | 2.86 | 6.6 | 7.19 | 7.5 | 9.14 | 9.13 |
| NA | 2.3 | ADP Reports are prepared | NA | NA | NA | NA | NA | 9.36 |
| 2.3 | 2.4 | Annual Financial Statement is prepared | 0 | 0 | 4.63 | 2.29 | 5.79 | 7.24 |
| 2.4 | NA | Gap between Budget and expenditure | 4 | 5.14 | 6.03 | 6.59 | 5.34 | NA |
| 3.1 | 3.1 | Five Year Development Plan (FYP) | 4 | 5.96 | 6.46 | 6.89 | 8.3 | 6.6 |
| NA | 3.2 | Annual Development Plan (AP) is Prepared | NA | NA | NA | NA | NA | 7.87 |
| 3.2 | NA | ADP allocation to sectors | 6.29 | 7.09 | 7.27 | 8.43 | 9.21 | NA |
| 3.3 | NA | Development Project sites inspection by UZP Officers | 6.14 | 4.47 | 4.96 | 4.31 | 5.29 | NA |
| 3.4 | NA | UPP prepared for each project | 0.29 | 5.71 | 5.69 | 6.77 | 3.61 | NA |
| 4.3 | 4.1 | Information Focal Point (IFP) is assigned | 3.5 | 5.46 | 6.23 | 6.3 | 8.2 | 9.8 |
| 4.4 | 4.2 | Citizen Charter is prepared and publicized | 3 | 5.47 | 6.87 | 5.9 | 8.43 | 9.86 |
| 4.1 | NA | UDCC meeting are held in each Union Parishad | 1.5 | 4.26 | 5.16 | 5.37 | 6.56 | NA |
| 4.2 | NA | Budget & FYP displayed for public scrutiny | 3.76 | 5.29 | 4.73 | 4.23 | 7.53 | NA |

NA =Not Applicable

| Legend | PA6 indicators similar with PA1-5 | PA1-5 indicators dropped in PA6 | New indicators added in PA6 |
|--------|-----------------------------------|---------------------------------|-----------------------------|
| | | | |

Note:

- Out of 16 indicators in PA1-5, seven indicators are measured in PA6.
- Seven performance Indicators in PA6 matched with Performance Indicators of PA1-5.
- Three new indicators, which were not measured in PA1-5, are added in PA6.
- All scores of Performances Indicators of PA 1-5 were converted to 10 scores from 7 scores for comparative analysis with PA6.

Key Findings

- The average scores of each indicator in PA6 increased except UCs meeting, Asset Register and FYP preparation compared with PA5.
- The average score of newly added indicators in PA6, Upazila Parishad Meeting and ADP report were relatively high as more than 9 while, the score of annual development plan was 7.87.
- The indicator of Annual Budget improved to 9.05 in PA6 from 7.21 in PA5.

Table 5: Division-wise Number, % of Upazilas Selected & Not Selected and Ranked by Average Scores (PA6)

| Sl. No | Division Name | Number of Upazilas | Number of Upazilas Selected | Number of Upazilas not selected | Percentage of selected Upazilas | Average score |
|------------|---------------|--------------------|-----------------------------|---------------------------------|---------------------------------|---------------|
| 1 | Khulna | 59 | 59 | 0 | 100.0% | 92.8 |
| 2 | Mymensingh | 35 | 32 | 3 | 91.4% | 91.2 |
| 3 | Rajshahi | 67 | 67 | 0 | 100.0% | 89.3 |
| 4 | Rangpur | 58 | 57 | 1 | 98.3% | 88.5 |
| 5 | Barishal | 42 | 42 | 0 | 100.0% | 88.5 |
| 6 | Dhaka | 88 | 86 | 2 | 97.7% | 87.7 |
| 7 | Chattogram | 103 | 96 | 7 | 93.2% | 84.6 |
| 8 | Sylhet | 40 | 40 | 0 | 100.0% | 82.5 |
| All | | 492 | 479 | 13 | 97.4% | 87.8 |

Major finding:

- Khulna has the highest average score of 92.8 followed by Mymensingh with an average score of 91.2, while Sylhet has the lowest average score of 82.5.
- All the Upazilas were selected in the Divisions of Khulna, Rajshahi, Barishal, and Sylhet, while some Upazilas were not selected in the other four remaining Divisions.
- Overall, 97.4% of Upazilas have passed preconditions in PA6, and the average score of all Divisions was 87.8 out of 100

Table 6: District-wise Number, % of Upazilas Selected & Not Selected and Ranked by Average Scores (PA6)

| Sl. No | District Name | Number of Upazilas | Number of Upazilas Selected | Number of Upazilas Not Selected | Percentage of selected Upazilas | Average score by District |
|--------|-----------------|--------------------|-----------------------------|---------------------------------|---------------------------------|---------------------------|
| 1 | Jhalokati | 4 | 4 | 0 | 100.0% | 100.0 |
| 2 | Magura | 4 | 4 | 0 | 100.0% | 99.0 |
| 3 | Mymensingh | 13 | 12 | 1 | 92.3% | 98.5 |
| 4 | Thakurgaon | 5 | 5 | 0 | 100.0% | 98.0 |
| 5 | Chapainawabganj | 5 | 5 | 0 | 100.0% | 97.4 |
| 6 | Chandpur | 8 | 7 | 1 | 87.5% | 97.3 |
| 7 | Noakhali | 9 | 9 | 0 | 100.0% | 97.1 |
| 8 | Nilphamari | 6 | 6 | 0 | 100.0% | 96.8 |
| 9 | Lakshmipur | 5 | 5 | 0 | 100.0% | 96.8 |
| 10 | Jhenaidah | 6 | 6 | 0 | 100.0% | 96.5 |
| 11 | Chuadanga | 4 | 4 | 0 | 100.0% | 96.0 |
| 12 | Narail | 3 | 3 | 0 | 100.0% | 96.0 |
| 13 | Rangpur | 8 | 8 | 0 | 100.0% | 96.0 |
| 14 | Dhaka | 5 | 5 | 0 | 100.0% | 95.8 |
| 15 | Jamalpur | 7 | 7 | 0 | 100.0% | 95.0 |
| 16 | Khulna | 9 | 9 | 0 | 100.0% | 94.7 |
| 17 | Munshiganj | 6 | 5 | 1 | 83.3% | 94.0 |
| 18 | Rajshahi | 9 | 9 | 0 | 100.0% | 93.4 |
| 19 | Manikganj | 7 | 7 | 0 | 100.0% | 93.3 |
| 20 | Sirajganj | 9 | 9 | 0 | 100.0% | 93.2 |
| 21 | Kushtia | 6 | 6 | 0 | 100.0% | 93.2 |
| 22 | Jashore | 8 | 8 | 0 | 100.0% | 92.9 |
| 23 | Kishoreganj | 13 | 12 | 1 | 92.3% | 92.6 |
| 24 | Feni | 6 | 6 | 0 | 100.0% | 92.5 |
| 25 | Bagerhat | 9 | 9 | 0 | 100.0% | 91.9 |
| 26 | Shariatpur | 6 | 6 | 0 | 100.0% | 91.8 |
| 27 | Meherpur | 3 | 3 | 0 | 100.0% | 91.3 |
| 28 | Lalmonirhat | 5 | 5 | 0 | 100.0% | 91.2 |
| 29 | Tangail | 12 | 12 | 0 | 100.0% | 91.2 |
| 30 | Narayanganj | 5 | 5 | 0 | 100.0% | 90.8 |
| 31 | Rajbari | 5 | 5 | 0 | 100.0% | 90.8 |
| 32 | Netrokona | 10 | 8 | 2 | 80.0% | 90.5 |
| 33 | Bhola | 7 | 7 | 0 | 100.0% | 90.4 |
| 34 | Cumilla | 17 | 16 | 1 | 94.1% | 89.8 |
| 35 | Sherpur | 5 | 5 | 0 | 100.0% | 89.4 |
| 36 | Patuakhali | 8 | 8 | 0 | 100.0% | 89.4 |
| 37 | Naogaon | 11 | 11 | 0 | 100.0% | 88.1 |
| 38 | Bogura | 12 | 12 | 0 | 100.0% | 88.0 |

Table 6: District-wise Number, % of Upazilas Selected & Not Selected and Ranked by Average Scores (PA6)

| Sl. No | District Name | Number of Upazilas | Number of Upazilas Selected | Number of Upazilas Not Selected | Percentage of selected Upazilas | Average score by District |
|--------|---------------|--------------------|-----------------------------|---------------------------------|---------------------------------|---------------------------|
| 39 | Barishal | 10 | 10 | 0 | 100.0% | 87.3 |
| 40 | Cox's Bazar | 8 | 8 | 0 | 100.0% | 87.3 |
| 41 | Joypurhat | 5 | 5 | 0 | 100.0% | 86.8 |
| 42 | Natore | 7 | 7 | 0 | 100.0% | 86.3 |
| 43 | Narsingdi | 6 | 6 | 0 | 100.0% | 86.0 |
| 44 | Dinajpur | 13 | 12 | 1 | 92.3% | 86.0 |
| 45 | Gaibandha | 7 | 7 | 0 | 100.0% | 86.0 |
| 46 | Sunamganj | 11 | 11 | 0 | 100.0% | 85.1 |
| 47 | Barguna | 6 | 6 | 0 | 100.0% | 85.0 |
| 48 | Panchagarh | 5 | 5 | 0 | 100.0% | 84.8 |
| 49 | Rangamati | 10 | 9 | 1 | 90.0% | 84.8 |
| 50 | Pirojpur | 7 | 7 | 0 | 100.0% | 83.6 |
| 51 | Pabna | 9 | 9 | 0 | 100.0% | 83.3 |
| 52 | Sylhet | 13 | 13 | 0 | 100.0% | 83.2 |
| 53 | Brahmanbaria | 9 | 7 | 2 | 77.8% | 83.0 |
| 54 | Faridpur | 9 | 9 | 0 | 100.0% | 82.4 |
| 55 | Satkhira | 7 | 7 | 0 | 100.0% | 82.1 |
| 56 | Chattogram | 15 | 15 | 0 | 100.0% | 82.1 |
| 57 | Gazipur | 5 | 5 | 0 | 100.0% | 82.0 |
| 58 | Gopalganj | 5 | 5 | 0 | 100.0% | 81.6 |
| 59 | Khagrachhari | 9 | 8 | 1 | 88.9% | 80.3 |
| 60 | Kurigram | 9 | 9 | 0 | 100.0% | 80.2 |
| 61 | Moulvibazar | 7 | 7 | 0 | 100.0% | 80.1 |
| 62 | Habiganj | 9 | 9 | 0 | 100.0% | 80.0 |
| 63 | Madaripur | 4 | 4 | 0 | 100.0% | 78.5 |
| 64 | Bandarban | 7 | 6 | 1 | 85.7% | 76.5 |
| | All | 492 | 479 | 13 | 97.4% | 87.8 |

Key findings:

- The Districts are ranked based on their average scores, with Jhalokati (100) at the top and Bandarban at the bottom (76.5).
- Jhalokati has the highest average score of 100.0 followed by Magura (99.0) and Mymensingh (98.5).
- Out of 64 Districts, 53 (82.8%) Districts have all their Upazilas selected, while the rest of 11 (17.2%) Districts have at least one Upazila and maximum 2 Upazilas not selected.
- Among the Districts, the low percentage of selected Upazila is Brahmanbaria (77.8%), Netrokona (80%), and Munshiganj (83.33%).

Table 7: List of Top Scored Upazilas (Passed/ Fulfilled Preconditions & Scored 100 out of 100) (PA6)

| SL | Division | District | Upazila | DDU Code | Score |
|----|------------|--------------|-----------------------|----------|-------|
| 1 | Barishal | Barishal | Barishal Sadar | 100651 | 100 |
| 2 | Barishal | Jhalokati | Jhalokati Sadar | 104240 | 100 |
| 3 | Barishal | Jhalokati | Kathalia | 104243 | 100 |
| 4 | Barishal | Jhalokati | Nalchity | 104273 | 100 |
| 5 | Barishal | Jhalokati | Rajapur | 104284 | 100 |
| 6 | Barishal | Patuakhali | Dumki | 107855 | 100 |
| 7 | Chattogram | Brahmanbaria | Kasba | 201263 | 100 |
| 8 | Chattogram | Chandpur | Chandpur Sadar | 201322 | 100 |
| 9 | Chattogram | Chandpur | Haimchar | 201347 | 100 |
| 10 | Chattogram | Chandpur | Matlab Dakshin | 201376 | 100 |
| 11 | Chattogram | Cox's Bazar | Ramu | 202266 | 100 |
| 12 | Chattogram | Cumilla | Cumilla Adarsha Sadar | 201967 | 100 |
| 13 | Chattogram | Cumilla | Cumilla Sadar Dakshin | 201933 | 100 |
| 14 | Chattogram | Cumilla | Homna | 201954 | 100 |
| 15 | Chattogram | Khagrachhari | Dighinala | 204643 | 100 |
| 16 | Chattogram | Lakshmipur | Lakshmipur Sadar | 205143 | 100 |
| 17 | Chattogram | Lakshmipur | Ramgati | 205173 | 100 |
| 18 | Chattogram | Lakshmipur | Roypur | 205158 | 100 |
| 19 | Chattogram | Noakhali | Chatkhil | 207510 | 100 |
| 20 | Chattogram | Noakhali | Companiganj | 207521 | 100 |
| 21 | Chattogram | Noakhali | Kabirhat | 207547 | 100 |
| 22 | Chattogram | Noakhali | Noakhali sadar | 207587 | 100 |
| 23 | Chattogram | Noakhali | Subarnochar | 207585 | 100 |
| 24 | Chattogram | Rangamati | Baghaichhari | 208407 | 100 |
| 25 | Dhaka | Dhaka | Keraniganj | 302638 | 100 |
| 26 | Dhaka | Dhaka | Nawabganj | 302662 | 100 |
| 27 | Dhaka | Kishoreganj | Katiadi | 304845 | 100 |
| 28 | Dhaka | Kishoreganj | Kishoreganj Sadar | 304849 | 100 |

Table 7: List of Top Scored Upazilas (Passed/ Fulfilled Preconditions & Scored 100 out of 100) (PA6)

| SL | Division | District | Upazila | DDU Code | Score |
|----|------------|-------------|------------------|----------|-------|
| 29 | Dhaka | Kishoreganj | Pukundia | 304879 | 100 |
| 30 | Dhaka | Manikganj | Ghior | 305622 | 100 |
| 31 | Dhaka | Manikganj | Saturia | 305670 | 100 |
| 32 | Dhaka | Narayanganj | Bandar | 306706 | 100 |
| 33 | Dhaka | Narayanganj | Rupganj | 306768 | 100 |
| 34 | Dhaka | Narsingdi | Shibpur | 306876 | 100 |
| 35 | Dhaka | Shariatpur | Gosairhat | 308636 | 100 |
| 36 | Dhaka | Shariatpur | Shariatpur Sadar | 308669 | 100 |
| 37 | Dhaka | Tangail | Basail | 309309 | 100 |
| 38 | Dhaka | Tangail | Sakhipur | 309385 | 100 |
| 39 | Dhaka | Tangail | Tangail Sadar | 309395 | 100 |
| 40 | Khulna | Bagerhat | Bagerhat Sadar | 400108 | 100 |
| 41 | Khulna | Bagerhat | Kachua | 400138 | 100 |
| 42 | Khulna | Bagerhat | Morrelganj | 400160 | 100 |
| 43 | Khulna | Chuadanga | Damurhuda | 401831 | 100 |
| 44 | Khulna | Jhenaidah | Harinakunda | 404414 | 100 |
| 45 | Khulna | Jhenaidah | Jhenaidah Sadar | 404419 | 100 |
| 46 | Khulna | Khulna | Batiaghata | 404712 | 100 |
| 47 | Khulna | Khulna | Dacope | 404717 | 100 |
| 48 | Khulna | Khulna | Dumuria | 404730 | 100 |
| 49 | Khulna | Kushtia | Mirpur | 405094 | 100 |
| 50 | Khulna | Magura | Mohammadpur | 405566 | 100 |
| 51 | Khulna | Magura | Shalikha | 405585 | 100 |
| 52 | Mymensingh | Jamalpur | Islampur | 453929 | 100 |
| 53 | Mymensingh | Jamalpur | Madarganj | 453958 | 100 |
| 54 | Mymensingh | Jamalpur | Melandaha | 453961 | 100 |
| 55 | Mymensingh | Jamalpur | Sarishabari | 453985 | 100 |
| 56 | Mymensingh | Mymensingh | Bhaluka | 456113 | 100 |
| 57 | Mymensingh | Mymensingh | Fulbaria | 456120 | 100 |
| 58 | Mymensingh | Mymensingh | Gaffargaon | 456122 | 100 |
| 59 | Mymensingh | Mymensingh | Haluaghat | 456124 | 100 |
| 60 | Mymensingh | Mymensingh | Mymensingh Sadar | 456152 | 100 |
| 61 | Mymensingh | Mymensingh | Nandail | 456172 | 100 |
| 62 | Mymensingh | Mymensingh | Tarakanda | 456188 | 100 |
| 63 | Mymensingh | Mymensingh | Trishal | 456194 | 100 |
| 64 | Mymensingh | Netrokona | Atpara | 457204 | 100 |
| 65 | Mymensingh | Netrokona | Kendua | 457247 | 100 |
| 66 | Mymensingh | Sherpur | Jhenaigati | 458937 | 100 |
| 67 | Rajshahi | Bogura | Shajahanpur | 501085 | 100 |
| 68 | Rajshahi | Naogaon | Manda | 506447 | 100 |
| 69 | Rajshahi | Naogaon | Naogaon Sadar | 506460 | 100 |
| 70 | Rajshahi | Rajshahi | Charghat | 508125 | 100 |
| 71 | Rajshahi | Rajshahi | Durgapur | 508131 | 100 |
| 72 | Rajshahi | Rajshahi | Godagari | 508134 | 100 |
| 73 | Rajshahi | Rajshahi | Paba | 508172 | 100 |
| 74 | Rajshahi | Rajshahi | Puthia | 508182 | 100 |
| 75 | Rangpur | Dinajpur | Bochaganj | 552721 | 100 |
| 76 | Rangpur | Gaibandha | Gaibandha Sadar | 553224 | 100 |
| 77 | Rangpur | Gaibandha | Sadullapur | 553282 | 100 |
| 78 | Rangpur | Nilphamari | Domar | 557315 | 100 |
| 79 | Rangpur | Nilphamari | Jaldhaka | 557336 | 100 |
| 80 | Rangpur | Nilphamari | Saidpur | 557385 | 100 |
| 81 | Rangpur | Rangpur | Mithapukur | 558558 | 100 |
| 82 | Rangpur | Rangpur | Pirgachha | 558573 | 100 |
| 83 | Rangpur | Rangpur | Pirganj | 558576 | 100 |
| 84 | Rangpur | Thakurgaon | Baliadangi | 559408 | 100 |
| 85 | Rangpur | Thakurgaon | Haripur | 559451 | 100 |
| 86 | Rangpur | Thakurgaon | Pirganj | 559482 | 100 |
| 87 | Rangpur | Thakurgaon | Thakurgaon Sadar | 559494 | 100 |

Key Findings

- Among all Upazilas of the 8 Divisions passed and fulfilled all preconditions, Upazilas in Chattogram division (18) scored 100, followed by Dhaka and Mymensingh (15 respectively), Rangpur (13), Khulna (12), Rajshahi (8), Barishal (6) and no Upazila scored 100 in Sylhet Division.
- The percentage of Upazilas scored 100 is highest in Mymensingh Division (42.8%), followed by Rangpur (22.4%), Khulna (20.3%), Chattogram (17.5%), Dhaka (17.1%), Barishal (14.2%), Rajshahi (11.9%) and the lowest in Sylhet (0%).

Table 8: Results of 6th Performance Assessment of UGDP

| Selected for 6th Round | | Not Selected for 6th Round and Not Selected for Rounds 1 to 5 in the Total Score Columns | | | | | | | | | | | | | | 1 Lac = 100,000 | | | | | | | | | | | | | | | | | |
|------------------------|----------|--|-----------------------|--------|----------------------------|---|---|---|---|--|-----|-------------------------------|-----|-----|-------------------|-----------------|---------------------------------|-------------------------|-----|--------------------------------|------------------------|--|-----------------|------------------|---|-----------------------|-----------------------|-----------------------|-----------------------|-----------------------|-----------------------|---|------------------------------------|
| SL | Division | District | Upazila | Code | Precondition Indicators | | | | | Performance Indicators (Each Indicator 10 Marks) | | | | | | | | Summary of PA 6 Results | | | | 6 Years Scores | | | | | | PBA Allocation | | | | | |
| | | | | | (v) Passed, (x) Not Passed | | | | | Institutional Capacity | | Financial Management Capacity | | | Planning Capacity | | Transparency and Accountability | | | Obtained Score Total Score 100 | Counting Preconditions | Precondition Passed (v) / Not Passed (x) | Rank-Nationwide | Rank in District | Selected as 6th Round Upazilas (Yes/No) | Total Score in 1st PA | Total Score in 2nd PA | Total Score in 3rd PA | Total Score in 4th PA | Total Score in 5th PA | Total Score in 6th PA | Total amount of PBA Round 1 to 5 (BDT in Lac) | Amount of PBA Round 6 (BDT in Lac) |
| | | | | | 1 | 2 | 3 | 4 | 5 | 1.1 | 1.2 | 2.1 | 2.2 | 2.3 | 2.4 | 3.1 | 3.2 | 4.1 | 4.2 | | | | | | | | | | | | | | |
| 76 | | | Patiya | 201561 | v | v | v | v | v | 10 | 10 | 10 | 10 | 10 | 10 | 8 | 4 | 10 | 10 | 92 | 5 | v | 217 | 5 | YES | 28 | 48 | 46 | 68 | 82 | 92 | 160 | 40 |
| 77 | | | Rangunia | 201570 | v | v | v | v | v | 10 | 5 | 10 | 10 | 10 | 8 | 3 | 4 | 10 | 10 | 80 | 5 | v | 381 | 8 | YES | 19 | 42 | 72 | 73 | 91 | 80 | 180 | 40 |
| 78 | | | Raozan | 201574 | v | v | v | v | v | 10 | 10 | 8 | 10 | 10 | 2 | 0 | 3 | 10 | 10 | 73 | 5 | v | 432 | 11 | YES | 28 | 33 | 63 | 81 | 85 | 73 | 180 | 40 |
| 79 | | | Sandwip | 201578 | v | v | v | v | v | 10 | 10 | 8 | 10 | 10 | 2 | 0 | 3 | 10 | 10 | 73 | 5 | v | 432 | 11 | YES | 50 | 57 | 76 | 72 | 59 | 73 | 260 | 40 |
| 80 | | | Satkania | 201582 | v | v | v | v | v | 10 | 3 | 4 | 10 | 10 | 0 | 0 | 3 | 10 | 10 | 60 | 5 | v | 478 | 15 | YES | 10 | 45 | 16 | 35 | 48 | 60 | 50 | 40 |
| 81 | | | Sitakunda | 201586 | v | v | v | v | v | 10 | 8 | 10 | 10 | 10 | 10 | 0 | 8 | 10 | 10 | 86 | 5 | v | 310 | 6 | YES | 33 | 25 | 60 | 26 | 71 | 86 | 50 | 40 |
| 82 | | | Chakaria | 202216 | v | v | v | v | v | 10 | 10 | 10 | 10 | 10 | 10 | 10 | 8 | 10 | 10 | 98 | 5 | v | 88 | 2 | YES | 61 | 59 | 69 | 83 | 91 | 98 | 220 | 40 |
| 83 | | | Cox's Bazar Sadar | 202224 | v | v | v | v | v | 10 | 8 | 10 | 8 | 10 | 0 | 0 | 7 | 10 | 10 | 73 | 5 | v | 432 | 8 | YES | 2 | 8 | 7 | 37 | 46 | 73 | 100 | 40 |
| 84 | | | Kutubdia | 202245 | v | v | v | v | v | 10 | 10 | 8 | 10 | 10 | 10 | 10 | 8 | 10 | 10 | 96 | 5 | v | 152 | 3 | YES | 21 | 32 | 52 | 50 | 66 | 96 | 150 | 40 |
| 85 | | | Maheshkhali | 202249 | v | v | v | v | v | 10 | 10 | 10 | 8 | 10 | 0 | 0 | 10 | 10 | 10 | 78 | 5 | v | 396 | 6 | YES | 5 | 0 | 36 | 50 | 70 | 78 | 50 | 40 |
| 86 | | | Pekua | 202256 | v | v | v | v | v | 10 | 10 | 6 | 3 | 10 | 2 | 8 | 8 | 10 | 10 | 77 | 5 | v | 402 | 7 | YES | 36 | 7 | 39 | 37 | 59 | 77 | 50 | 40 |
| 87 | | | Ramu | 202266 | v | v | v | v | v | 10 | 10 | 10 | 10 | 10 | 10 | 10 | 10 | 10 | 100 | 5 | v | 1 | 1 | YES | 28 | 25 | 47 | 47 | 77 | 100 | 50 | 50 | |
| 88 | | | Teknaf | 202290 | v | v | v | v | v | 10 | 10 | 8 | 10 | 10 | 10 | 10 | 8 | 10 | 10 | 96 | 5 | v | 152 | 3 | YES | 17 | 22 | 31 | 57 | 85 | 96 | 320 | 40 |
| 89 | | | Ukhia | 202294 | v | v | v | v | v | 10 | 10 | 8 | 8 | 6 | 0 | 10 | 8 | 10 | 10 | 80 | 5 | v | 381 | 5 | YES | 3 | 26 | 36 | 32 | 66 | 80 | 300 | 40 |
| 90 | | | Barura | 201909 | v | v | v | v | v | 10 | 10 | 8 | 5 | 10 | 10 | 0 | 3 | 10 | 10 | 76 | 5 | v | 410 | 15 | YES | 42 | 25 | 46 | 16 | 71 | 76 | 100 | 40 |
| 91 | | | Brahmanpara | 201915 | v | v | v | v | v | 10 | 10 | 8 | 10 | 10 | 10 | 10 | 10 | 10 | 98 | 5 | v | 88 | 4 | YES | 27 | 60 | 35 | 61 | 80 | 98 | 110 | 40 | |
| 92 | | | Burichang | 201918 | v | v | v | v | v | 10 | 10 | 10 | 10 | 10 | 10 | 0 | 10 | 10 | 10 | 90 | 5 | v | 240 | 9 | YES | 46 | 78 | 79 | 71 | 75 | 90 | 250 | 40 |
| 93 | | | Chandina | 201927 | v | v | v | v | v | 10 | 3 | 8 | 10 | 10 | 10 | 0 | 10 | 10 | 81 | 5 | v | 372 | 13 | YES | 31 | 28 | 44 | 52 | 61 | 81 | 50 | 40 | |
| 94 | | | Chaudagram | 201931 | v | v | v | v | v | 10 | 10 | 10 | 6 | 10 | 0 | 3 | 10 | 10 | 79 | 5 | v | 393 | 14 | YES | 33 | 72 | 45 | 78 | 64 | 79 | 210 | 40 | |
| 95 | | | Cumilla Adarsha Sadar | 201967 | v | v | v | v | v | 10 | 10 | 10 | 10 | 10 | 10 | 10 | 10 | 10 | 100 | 5 | v | 1 | 1 | YES | 28 | 82 | 79 | 89 | 77 | 100 | 220 | 50 | |
| 96 | | | Cumilla Sadar Dakshin | 201933 | v | v | v | v | v | 10 | 10 | 10 | 10 | 10 | 10 | 10 | 10 | 10 | 100 | 5 | v | 1 | 1 | YES | 45 | 74 | 79 | 76 | 74 | 100 | 210 | 50 | |
| 97 | | | Daudkandi | 201936 | v | v | v | v | v | 10 | 10 | 10 | 10 | 10 | 10 | 10 | 7 | 10 | 10 | 97 | 5 | v | 148 | 5 | YES | 32 | 36 | 86 | 85 | 75 | 97 | 170 | 40 |
| 98 | | | Debidwar | 201940 | v | v | v | v | v | 10 | 10 | 10 | 0 | 8 | 10 | 0 | 7 | 10 | 10 | 75 | 5 | v | 420 | 16 | YES | 40 | 37 | 11 | 82 | 91 | 75 | 130 | 50 |
| 99 | | | Homna | 201954 | v | v | v | v | v | 10 | 10 | 10 | 10 | 10 | 10 | 10 | 10 | 10 | 100 | 5 | v | 1 | 1 | YES | 32 | 44 | 54 | 77 | 87 | 100 | 130 | 50 | |
| 100 | | | Laksam | 201972 | v | v | v | v | v | 10 | 10 | 10 | 10 | 10 | 10 | 5 | 10 | 10 | 95 | 5 | v | 180 | 6 | YES | 22 | 57 | 65 | 62 | 73 | 95 | 150 | 40 | |
| 101 | | | Lalmai | 201973 | v | v | v | v | v | 10 | 10 | 4 | 10 | 10 | 10 | 10 | 10 | 10 | 94 | 5 | v | 188 | 7 | YES | 0 | 21 | 15 | 65 | 94 | 50 | 40 | | |
| 102 | | | Meghna | 201975 | v | v | v | v | v | 10 | 5 | 8 | 10 | 10 | 2 | 10 | 10 | 10 | 85 | 5 | v | 328 | 11 | YES | 31 | 41 | 52 | 60 | 66 | 85 | 150 | 40 | |
| 103 | | | Monoharganj | 201974 | v | v | v | v | v | 10 | 10 | 8 | 10 | 6 | 10 | 10 | 10 | 10 | 94 | 5 | v | 188 | 7 | YES | 17 | 14 | 3 | 23 | 77 | 94 | 100 | 40 | |
| 104 | | | Muradnagar | 201981 | v | v | v | v | v | 10 | 10 | 10 | 10 | 10 | 0 | 10 | 10 | 10 | 10 | 90 | 5 | v | 240 | 9 | YES | 51 | 21 | 30 | 87 | 74 | 90 | 170 | 40 |
| 105 | | | Nangalkot | 201987 | x | v | x | v | v | 0 | 10 | 0 | 0 | 10 | 0 | 10 | 10 | 10 | 60 | 3 | x | 478 | 17 | NO | 43 | 80 | 79 | 72 | 76 | 60 | 210 | 0 | |
| 106 | | | Titas | 201994 | v | v | v | v | v | 10 | 10 | 10 | 10 | 3 | 2 | 10 | 8 | 10 | 10 | 83 | 5 | v | 348 | 12 | YES | 43 | 74 | 79 | 55 | 86 | 83 | 220 | 40 |
| 107 | | | Chhagalnaiya | 203014 | v | v | v | v | v | 10 | 10 | 10 | 10 | 10 | 4 | 8 | 7 | 10 | 10 | 89 | 5 | v | 278 | 5 | YES | 32 | 17 | 62 | 41 | 74 | 89 | 100 | 40 |
| 108 | | | Daganbhuiyan | 203025 | v | v | v | v | v | 10 | 10 | 10 | 10 | 3 | 10 | 10 | 10 | 10 | 10 | 93 | 5 | v | 204 | 4 | YES | 13 | 42 | 55 | 75 | 78 | 93 | 170 | 40 |
| 109 | | | Feni Sadar | 203029 | v | v | v | v | v | 10 | 10 | 10 | 10 | 10 | 10 | 8 | 7 | 10 | 10 | 95 | 5 | v | 180 | 3 | YES | 15 | 45 | 66 | 46 | 75 | 95 | 200 | 40 |
| 110 | | | Fulgazi | 203041 | v | v | v | v | v | 10 | 8 | 10 | 10 | 10 | 10 | 10 | 10 | 10 | 10 | 98 | 5 | v | 88 | 1 | YES | 21 | 48 | 69 | 78 | 77 | 98 | 260 | 40 |
| 111 | | | Parshuram | 203051 | v | v | v | v | v | 10 | 10 | 8 | 10 | 10 | 10 | 10 | 10 | 10 | 10 | 98 | 5 | v | 88 | 1 | YES | 27 | 22 | 37 | 31 | 54 | 98 | 50 | 40 |
| 112 | | | Sonagazi | 203094 | v | v | v | v | v | 10 | 8 | 8 | 10 | 8 | 10 | 5 | 3 | 10 | 10 | 82 | 5 | v | 363 | 6 | YES | 2 | 31 | 64 | 58 | 71 | 82 | 100 | 40 |
| 113 | | | Dighinala | 204643 | v | v | v | v | v | 10 | 10 | 10 | 10 | 10 | 10 | 10 | 10 | 10 | 100 | 5 | v | 1 | 1 | YES | 23 | 62 | 37 | 69 | 82 | 100 | 160 | 50 | |
| 114 | | | Guimara | 204647 | v | v | v | v | v | 10 | 10 | 2 | 8 | 10 | 10 | 10 | 10 | 10 | 80 | 5 | v | 381 | 4 | YES | 34 | 44 | 27 | 56 | 80 | 100 | 40 | | |
| 115 | | | Khagrachhari Sadar | 204649 | v | v | v | v | v | 10 | 10 | 10 | 10 | 10 | 10 | 3 | 10 | 10 | 93 | 5 | v | 204 | 2 | YES | 4 | 16 | 27 | 20 | 55 | 93 | 50 | 40 | |
| 116 | | | Lakshmichhari | 204661 | v | v | v | v | v | 10 | 5 | 10 | 10 | 8 | 0 | 0 | 10 | 10 | 73 | 5 | v | 432 | 6 | YES | 32 | 50 | 51 | 62 | 66 | 73 | 150 | 40 | |
| 117 | | | Mahalchhari | 204665 | v | v | v | v | v | 10 | 10 | 10 | 10 | 6 | 10 | 0 | 7 | 10 | 10 | 83 | 5 | v | 348 | 3 | YES | 35 | 44 | 18 | 53 | 75 | 83 | 50 | 40 |
| 118 | | | Manikchhari | 204667 | v | v | v | v | v | 10 | 3 | 10 | 10 | 10 | 2 | 0 | 4 | 10 | 10 | 69 | 5 | v | 454 | 7 | YES | 35 | 65 | 22 | 56 | 49 | 69 | 250 | 40 |
| 119 | | | Matiranga | 204670 | v | v | v | v | v | 10 | 10 | 6 | 10 | 10 | 0 | 5 | 4 | 10 | 10 | 75 | 5 | v | 420 | 5 | YES | 39 | 71 | 81 | 77 | 58 | 75 | 210 | 40 |
| 120 | | | Panchhari | 204677 | v | v | x | x | v | 10 | 3 | 0 | 10 | 3 | 0 | 10 | 0 | 10 | 10 | 56 | 3 | x | 484 | 9 | NO | 20 | 15 | 30 | 29 | 74 | 56 | 150 | 0 |
| 121 | | | Ramgarh | 204680 | v | v | v | v | v | 10 | 5 | 10 | 10 | 10 | 0 | 0 | 4 | 10 | 10 | 69 | 5 | v | 454 | 7 | YES | 22 | 20 | 31 | 64 | 57 | 69 | 150 | 40 |
| 122 | | | Kamalnagar | 205133 | v | v | v | v | v | 10 | 10 | 10 | 10 | 10 | 8 | 10 | 10 | 0 | 10 | 88 | 5 | v | 284 | 5 | YES | 25 | 61 | 61 | 39 | 51 | 88 | 200 | 40 |
| 123 | | | Lakshimpur Sadar | 205143 | v | v | v | v | v | 10 | 10 | 10 | 10 | 10 | 10 | 10 | 10 | 10 | 100 | 5 | v | 1 | 1 | YES | 49 | 48 | 44 | 66 | 56 | 100 | 200 | 50 | |
| 124 | | | Ramganj | 205165 | v | v | v | v | v | 10 | 10 | 8 | 10 | 10 | 10 | 8 | 10 | 10 | 96 | 5 | v | 152 | 4 | YES | 17 | 66 | 58 | 25 | 67 | 96 | 150 | 40 | |
| 125 | | | Ramgati | 205173 | v | v | v | v | v | 10 | 10 | 10 | 10 | 10 | 10 | 10 | 10 | 10 | 100 | 5 | v | 1 | 1 | YES | 57 | 74 | 84 | 70 | 77 | 100 | 150 | 50 | |
| 126 | | | Royapur | 205158 | v | v | v | v | v | 10 | 10 | 10 | 10 | 10 | 10 | 10 | 10 | 10 | 100 | 5 | v | 1 | 1 | YES | 47 | 56 | 65 | 45 | 49 | 100 | 150 | 50 | |
| 127 | | | Begumganj | 207507 | v | v | v | v | v | 10 | 10 | 10 | 5 | 10 | 8 | 10 | 10 | 10 | 93 | 5 | v | 204 | 8 | | | | | | | | | | |

Table 8: Results of 6th Performance Assessment of UGDP

| | | Selected for 6th Round | | | | | | | | | | Not Selected for 6th Round and Not Selected for Rounds 1 to 5 in the Total Score Columns | | | | | | | | | | 1 Lac = 100,000 | | | | | | | | | | | |
|-----|----------|------------------------|-------------------|--------|----------------------------|---|---|---|---|--|-----|--|-----|-----|-------------------|-----|---------------------------------|-------------------------|-----|--------------------------------|------------------------|--|-----------------|------------------|---|-----------------------|-----------------------|-----------------------|-----------------------|-----------------------|-----------------------|---|------------------------------------|
| SL | Division | District | Upazila | Code | Precondition Indicators | | | | | Performance Indicators (Each Indicator 10 Marks) | | | | | | | | Summary of PA 6 Results | | | | | 6 Years Scores | | | | | PBA Allocation | | | | | |
| | | | | | (v) Passed, (x) Not Passed | | | | | Institutional Capacity | | Financial Management Capacity | | | Planning Capacity | | Transparency and Accountability | | | Obtained Score Total Score 100 | Counting Preconditions | Precondition Passed (V) / Not Passed (X) | Rank-Nationwide | Rank in District | Selected as 6th Round Upazila: (Yes/No) | Total Score in 1st PA | Total Score in 2nd PA | Total Score in 3rd PA | Total Score in 4th PA | Total Score in 5th PA | Total Score in 6th PA | Total amount of PBA Round 1 to 5 (BDT in Lac) | Amount of PBA Round 6 (BDT in Lac) |
| | | | | | 1 | 2 | 3 | 4 | 5 | 1.1 | 1.2 | 2.1 | 2.2 | 2.3 | 2.4 | 3.1 | 3.2 | 4.1 | 4.2 | | | | | | | | | | | | | | |
| 151 | | Faridpur | Alfadanga | 302903 | v | v | v | v | v | 10 | 10 | 8 | 3 | 10 | 2 | 0 | 3 | 10 | 10 | 66 | 5 | v | 464 | 8 | YES | 43 | 52 | 19 | 18 | 71 | 66 | 50 | 40 |
| 152 | | Faridpur | Bhanga | 302910 | v | v | v | v | v | 10 | 10 | 10 | 10 | 10 | 0 | 10 | 8 | 10 | 10 | 86 | 5 | v | 310 | 5 | YES | 29 | 51 | 62 | 38 | 35 | 86 | 100 | 40 |
| 153 | | Faridpur | Boalmari | 302918 | v | v | v | v | v | 10 | 5 | 8 | 3 | 10 | 0 | 0 | 10 | 10 | 10 | 66 | 5 | v | 464 | 8 | YES | 20 | 71 | 35 | 47 | 65 | 66 | 200 | 40 |
| 154 | | Faridpur | Charbhadrasan | 302921 | v | v | v | v | v | 10 | 10 | 10 | 10 | 6 | 10 | 0 | 10 | 10 | 10 | 86 | 5 | v | 310 | 5 | YES | 38 | 59 | 25 | 55 | 71 | 86 | 100 | 40 |
| 155 | | Faridpur | Faridpur Sadar | 302947 | v | v | v | v | v | 10 | 8 | 10 | 10 | 10 | 10 | 10 | 10 | 10 | 10 | 98 | 5 | v | 88 | 1 | YES | 48 | 85 | 25 | 65 | 65 | 98 | 150 | 40 |
| 156 | | Faridpur | Madhukhali | 302956 | v | v | v | v | v | 10 | 5 | 8 | 10 | 10 | 10 | 10 | 10 | 10 | 10 | 93 | 5 | v | 204 | 2 | YES | 3 | 46 | 32 | 78 | 69 | 93 | 160 | 40 |
| 157 | | Faridpur | Nagarkanda | 302962 | v | v | v | v | v | 10 | 10 | 6 | 10 | 8 | 10 | 10 | 8 | 10 | 10 | 92 | 5 | v | 217 | 3 | YES | 28 | 55 | 68 | 34 | 63 | 92 | 150 | 40 |
| 158 | | Faridpur | Sadarpur | 302984 | v | v | v | v | v | 10 | 10 | 10 | 10 | 8 | 10 | 0 | 10 | 10 | 10 | 88 | 5 | v | 284 | 4 | YES | 26 | 58 | 26 | 16 | 49 | 88 | 50 | 40 |
| 159 | | Faridpur | Saltha | 302990 | v | v | v | v | v | 10 | 8 | 10 | 3 | 10 | 0 | 0 | 6 | 10 | 10 | 67 | 5 | v | 461 | 7 | YES | 35 | 59 | 23 | 44 | 56 | 67 | 150 | 40 |
| 160 | | Gazipur | Gazipur Sadar | 303330 | v | v | v | v | v | 10 | 10 | 6 | 10 | 10 | 10 | 0 | 7 | 10 | 10 | 83 | 5 | v | 348 | 2 | YES | 27 | 69 | 72 | 63 | 56 | 83 | 150 | 40 |
| 161 | | Gazipur | Kaliakair | 303332 | v | v | v | v | v | 10 | 10 | 10 | 10 | 10 | 0 | 0 | 7 | 10 | 10 | 77 | 5 | v | 402 | 3 | YES | 42 | 76 | 91 | 49 | 50 | 77 | 250 | 40 |
| 162 | | Gazipur | Kaliganj | 303334 | v | v | v | v | v | 10 | 10 | 10 | 5 | 10 | 2 | 0 | 10 | 10 | 10 | 77 | 5 | v | 402 | 3 | YES | 14 | 22 | 40 | 72 | 65 | 77 | 110 | 40 |
| 163 | | Gazipur | Kapasla | 303336 | v | v | v | v | v | 10 | 8 | 10 | 10 | 10 | 10 | 8 | 10 | 10 | 10 | 96 | 5 | v | 152 | 1 | YES | 35 | 20 | 58 | 14 | 35 | 96 | 100 | 40 |
| 164 | | Gazipur | Sreepur | 303386 | v | v | v | v | v | 10 | 10 | 10 | 10 | 10 | 0 | 0 | 7 | 10 | 10 | 77 | 5 | v | 402 | 3 | YES | 15 | 47 | 21 | 52 | 7 | 77 | 50 | 40 |
| 165 | | Gopalganj | Gopalganj Sadar | 303532 | v | v | v | v | v | 10 | 3 | 4 | 10 | 8 | 10 | 10 | 10 | 10 | 10 | 85 | 5 | v | 328 | 3 | YES | 19 | 40 | 60 | 62 | 78 | 85 | 160 | 40 |
| 166 | | Gopalganj | Kashiani | 303543 | v | v | v | v | v | 10 | 10 | 10 | 0 | 10 | 0 | 10 | 10 | 10 | 10 | 80 | 5 | v | 381 | 4 | YES | 38 | 37 | 15 | 55 | 79 | 80 | 210 | 40 |
| 167 | | Gopalganj | Kotalipara | 303551 | v | v | v | v | v | 10 | 3 | 10 | 10 | 10 | 10 | 8 | 8 | 10 | 10 | 89 | 5 | v | 278 | 2 | YES | 23 | 40 | 38 | 41 | 71 | 89 | 250 | 40 |
| 168 | | Gopalganj | Muksudpur | 303558 | v | v | v | v | v | 10 | 8 | 10 | 0 | 6 | 0 | 0 | 10 | 10 | 10 | 64 | 5 | v | 471 | 5 | YES | 9 | 16 | 19 | 4 | 49 | 64 | 50 | 40 |
| 169 | | Gopalganj | Tungipara | 303591 | v | v | v | v | v | 10 | 10 | 10 | 10 | 10 | 2 | 10 | 8 | 10 | 10 | 90 | 5 | v | 240 | 1 | YES | 33 | 34 | 64 | 64 | 59 | 90 | 250 | 40 |
| 170 | | Kishoreganj | Austagram | 304802 | v | v | v | v | v | 10 | 8 | 8 | 10 | 10 | 0 | 10 | 7 | 10 | 10 | 83 | 5 | v | 348 | 10 | YES | 50 | 79 | 89 | 78 | 84 | 83 | 270 | 40 |
| 171 | | Kishoreganj | Bajitpur | 304806 | v | v | v | v | v | 10 | 10 | 10 | 10 | 10 | 10 | 10 | 6 | 10 | 10 | 96 | 5 | v | 152 | 7 | YES | 35 | 42 | 15 | 24 | 75 | 96 | 100 | 40 |
| 172 | | Kishoreganj | Bhairab | 304811 | v | v | v | v | v | 10 | 10 | 10 | 10 | 10 | 10 | 10 | 8 | 10 | 10 | 98 | 5 | v | 88 | 4 | YES | 45 | 50 | 68 | 84 | 90 | 98 | 180 | 40 |
| 173 | | Kishoreganj | Hossainpur | 304827 | v | v | v | v | v | 10 | 5 | 10 | 10 | 10 | 10 | 0 | 8 | 10 | 10 | 83 | 5 | v | 348 | 10 | YES | 34 | 67 | 91 | 71 | 70 | 83 | 200 | 40 |
| 174 | | Kishoreganj | Itna | 304833 | v | v | v | v | v | 10 | 10 | 10 | 8 | 8 | 10 | 10 | 8 | 10 | 10 | 94 | 5 | v | 188 | 9 | YES | 32 | 55 | 84 | 72 | 69 | 94 | 160 | 40 |
| 175 | | Kishoreganj | Karimganj | 304842 | v | v | v | v | v | 10 | 10 | 8 | 10 | 10 | 10 | 10 | 7 | 10 | 10 | 95 | 5 | v | 180 | 8 | YES | 37 | 58 | 40 | 59 | 78 | 95 | 110 | 40 |
| 176 | | Kishoreganj | Katiadi | 304845 | v | v | v | v | v | 10 | 10 | 10 | 10 | 10 | 10 | 10 | 10 | 10 | 10 | 100 | 5 | v | 1 | 1 | YES | 37 | 49 | 54 | 45 | 35 | 100 | 0 | 50 |
| 177 | | Kishoreganj | Kishoreganj Sadar | 304849 | v | v | v | v | v | 10 | 10 | 10 | 10 | 10 | 10 | 10 | 10 | 10 | 10 | 100 | 5 | v | 1 | 1 | YES | 38 | 75 | 63 | 43 | 82 | 100 | 160 | 50 |
| 178 | | Kishoreganj | Kuliarchar | 304854 | v | v | v | v | v | 10 | 10 | 8 | 10 | 10 | 10 | 10 | 10 | 10 | 10 | 98 | 5 | v | 88 | 4 | YES | 36 | 74 | 96 | 81 | 76 | 98 | 210 | 40 |
| 179 | | Kishoreganj | Mithamain | 304859 | x | x | x | x | x | 0 | 0 | 0 | 0 | 0 | 0 | 0 | 0 | 0 | 0 | 0 | 0 | x | 492 | 13 | NO | 26 | 51 | 24 | 7 | 39 | 0 | 0 | 0 |
| 180 | | Kishoreganj | Nikli | 304876 | v | v | v | v | v | 10 | 10 | 8 | 10 | 10 | 10 | 10 | 10 | 10 | 10 | 98 | 5 | v | 88 | 4 | YES | 49 | 76 | 87 | 75 | 79 | 98 | 270 | 40 |
| 181 | | Kishoreganj | Pukundia | 304879 | v | v | v | v | v | 10 | 10 | 10 | 10 | 10 | 10 | 10 | 10 | 10 | 10 | 100 | 5 | v | 1 | 1 | YES | 52 | 54 | 61 | 30 | 76 | 100 | 200 | 50 |
| 182 | | Kishoreganj | Tarail | 304892 | v | v | v | v | v | 10 | 3 | 10 | 8 | 6 | 2 | 0 | 7 | 10 | 10 | 66 | 5 | v | 464 | 12 | YES | 43 | 74 | 29 | 18 | 31 | 66 | 50 | 40 |
| 183 | | Madaripur | Kalkini | 305440 | v | v | v | v | v | 10 | 10 | 10 | 10 | 10 | 10 | 0 | 3 | 10 | 10 | 83 | 5 | v | 348 | 2 | YES | 57 | 73 | 48 | 11 | 61 | 83 | 200 | 40 |
| 184 | | Madaripur | Madaripur Sadar | 305454 | v | v | v | v | v | 10 | 10 | 4 | 10 | 10 | 2 | 0 | 8 | 10 | 10 | 74 | 5 | v | 425 | 3 | YES | 60 | 73 | 86 | 39 | 42 | 74 | 250 | 40 |
| 185 | | Madaripur | Rajoir | 305480 | v | v | v | v | v | 10 | 10 | 10 | 8 | 6 | 2 | 0 | 3 | 10 | 10 | 69 | 5 | v | 454 | 4 | YES | 52 | 41 | 27 | 59 | 42 | 69 | 100 | 40 |
| 186 | | Madaripur | Shibchar | 305487 | v | v | v | v | v | 10 | 10 | 10 | 10 | 10 | 10 | 0 | 8 | 10 | 10 | 88 | 5 | v | 284 | 1 | YES | 63 | 68 | 27 | 41 | 67 | 88 | 200 | 40 |
| 187 | | Manikganj | Daulatpur | 305610 | v | v | v | v | v | 10 | 10 | 10 | 10 | 6 | 10 | 10 | 10 | 10 | 10 | 96 | 5 | v | 152 | 4 | YES | 26 | 33 | 20 | 29 | 73 | 96 | 50 | 40 |
| 188 | | Manikganj | Ghior | 305622 | v | v | v | v | v | 10 | 10 | 10 | 10 | 10 | 10 | 10 | 10 | 10 | 10 | 100 | 5 | v | 1 | 1 | YES | 35 | 79 | 54 | 72 | 74 | 100 | 210 | 50 |
| 189 | | Manikganj | Harirampur | 305628 | v | v | v | v | v | 10 | 10 | 10 | 10 | 6 | 0 | 0 | 7 | 10 | 10 | 73 | 5 | v | 432 | 7 | YES | 63 | 85 | 93 | 73 | 80 | 73 | 270 | 40 |
| 190 | | Manikganj | Manikganj Sadar | 305646 | v | v | v | v | v | 10 | 10 | 10 | 10 | 10 | 10 | 0 | 10 | 10 | 10 | 90 | 5 | v | 240 | 6 | YES | 36 | 56 | 68 | 56 | 71 | 90 | 150 | 40 |
| 191 | | Manikganj | Saturia | 305670 | v | v | v | v | v | 10 | 10 | 10 | 10 | 10 | 10 | 10 | 10 | 10 | 10 | 100 | 5 | v | 1 | 1 | YES | 40 | 65 | 75 | 73 | 77 | 100 | 210 | 50 |
| 192 | | Manikganj | Shivalaya | 305678 | v | v | v | v | v | 10 | 10 | 10 | 10 | 6 | 10 | 10 | 10 | 10 | 10 | 96 | 5 | v | 152 | 4 | YES | 10 | 74 | 74 | 68 | 79 | 96 | 210 | 40 |
| 193 | | Manikganj | Singair | 305682 | v | v | v | v | v | 10 | 10 | 10 | 10 | 10 | 10 | 10 | 8 | 10 | 10 | 98 | 5 | v | 88 | 3 | YES | 56 | 85 | 88 | 90 | 82 | 98 | 280 | 40 |
| 194 | | Munshiganj | Gazaria | 305924 | v | v | v | v | v | 10 | 10 | 4 | 10 | 10 | 10 | 10 | 10 | 10 | 10 | 94 | 5 | v | 188 | 3 | YES | 61 | 67 | 91 | 76 | 77 | 94 | 210 | 40 |
| 195 | | Munshiganj | Lohajang | 305944 | v | v | v | v | v | 10 | 10 | 6 | 10 | 8 | 10 | 10 | 10 | 10 | 10 | 94 | 5 | v | 188 | 3 | YES | 31 | 44 | 79 | 49 | 73 | 94 | 150 | 40 |
| 196 | | Munshiganj | Munshiganj Sadar | 305956 | v | v | v | v | v | 10 | 10 | 6 | 10 | 10 | 10 | 10 | 10 | 10 | 10 | 96 | 5 | v | 152 | 2 | YES | 61 | 71 | 79 | 54 | 71 | 96 | 250 | 40 |
| 197 | | Munshiganj | Serajdikhan | 305974 | v | v | v | v | v | 10 | 10 | 8 | 10 | 10 | 10 | 0 | 10 | 10 | 10 | 88 | 5 | v | 284 | 5 | YES | 21 | 75 | 85 | 64 | 72 | 88 | 200 | 40 |
| 198 | | Munshiganj | Sreenagar | 305984 | v | v | v | v | v | 10 | 10 | 8 | 10 | 10 | 10 | 10 | 10 | 10 | 10 | 98 | 5 | v | 88 | 1 | YES | 38 | 25 | 50 | 80 | 76 | 98 | 110 | 40 |
| 199 | | Munshiganj | Tongibari | 305994 | v | v | v | v | x | 10 | 5 | 2 | 10 | 0 | 0 | 0 | 10 | 10 | 10 | 57 | 4 | x | 482 | 6 | NO | 74 | 69 | 74 | 79 | 89 | 57 | 280 | 0 |
| 200 | | Narayanganj | Araihazar | 306702 | v | v | v | v | v | 10 | 10 | 10 | 10 | 3 | 2 | 3 | 4 | 10 | 10 | 72 | 5 | v | 441 | 5 | YES | 49 | | | | | | | |

Table 8: Results of 6th Performance Assessment of UGDP

| | | Selected for 6th Round | | | | | | | | | | Not Selected for 6th Round and Not Selected for Rounds 1 to 5 in the Total Score Columns | | | | | | | | | | 1 Lac = 100,000 | | | | | | | | | | | | | | | | |
|-----|-----------------------|------------------------|------------------|--------|----------------------------|---|---|----|----|--|-----|--|-----|-----|-------------------|-----|---------------------------------|-------------------------|-----|--------------------------------|------------------------|--|-----------------|------------------|---|-----------------------|-----------------------|-----------------------|-----------------------|-----------------------|-----------------------|---|------------------------------------|-----|-----|-----|-----|----|
| SL | Division | District | Upazila | Code | Precondition Indicators | | | | | Performance Indicators (Each Indicator 10 Marks) | | | | | | | | Summary of PA 6 Results | | | | | 6 Years Scores | | | | | PBA Allocation | | | | | | | | | | |
| | | | | | (V) Passed, (x) Not Passed | | | | | Institutional Capacity | | Financial Management Capacity | | | Planning Capacity | | Transparency and Accountability | | | Obtained Score Total Score 100 | Counting Preconditions | Precondition Passed (V) / Not Passed (X) | Rank-Nationwide | Rank in District | Selected as 6th Round Upazilas (Yes/No) | Total Score in 1st PA | Total Score in 2nd PA | Total Score in 3rd PA | Total Score in 4th PA | Total Score in 5th PA | Total Score in 6th PA | Total amount of PBA Round 1 to 5 (BDT in Lac) | Amount of PBA Round 6 (BDT in Lac) | | | | | |
| | | | | | 1 | 2 | 3 | 4 | 5 | 1.1 | 1.2 | 2.1 | 2.2 | 2.3 | 2.4 | 3.1 | 3.2 | 4.1 | 4.2 | | | | | | | | | | | | | | | 1 | 2 | 3 | 4 | 5 |
| 301 | Mymensingh | Mymensingh | Dhobaura | 456116 | v | v | v | v | v | 10 | 10 | 10 | 10 | 10 | 10 | 10 | 10 | 10 | 10 | 10 | 10 | 10 | 10 | 10 | 90 | 5 | v | 240 | 12 | YES | 38 | 25 | 23 | 79 | 76 | 90 | 110 | 40 |
| 302 | | | Fulbaria | 456120 | v | v | v | v | v | 10 | 10 | 10 | 10 | 10 | 10 | 10 | 10 | 10 | 10 | 10 | 10 | 10 | 10 | 10 | 100 | 5 | v | 1 | 1 | YES | 30 | 29 | 29 | 12 | 44 | 100 | 50 | 50 |
| 303 | | | Gaffargaon | 456122 | v | v | v | v | v | 10 | 10 | 10 | 10 | 10 | 10 | 10 | 10 | 10 | 10 | 10 | 10 | 10 | 10 | 100 | 5 | v | 1 | 1 | YES | 39 | 67 | 82 | 79 | 81 | 100 | 220 | 50 | |
| 304 | | | Gauripur | 456123 | v | v | v | v | v | 10 | 8 | 10 | 10 | 10 | 10 | 10 | 10 | 10 | 10 | 10 | 10 | 10 | 10 | 98 | 5 | v | 88 | 9 | YES | 35 | 11 | 83 | 79 | 72 | 98 | 160 | 40 | |
| 305 | | | Haluaghat | 456124 | v | v | v | v | v | 10 | 10 | 10 | 10 | 10 | 10 | 10 | 10 | 10 | 10 | 10 | 10 | 10 | 10 | 100 | 5 | v | 1 | 1 | YES | 68 | 80 | 96 | 96 | 81 | 100 | 280 | 50 | |
| 306 | | | Ishwarganj | 456131 | v | v | v | v | v | 10 | 10 | 8 | 10 | 8 | 10 | 10 | 10 | 10 | 10 | 10 | 10 | 10 | 10 | 96 | 5 | v | 152 | 11 | YES | 7 | 4 | 9 | 24 | 79 | 96 | 60 | 40 | |
| 307 | | | Mukttagachha | 456165 | x | x | x | v | x | 0 | 0 | 0 | 5 | 0 | 10 | 0 | 10 | 10 | 10 | 10 | 10 | 10 | 45 | 1 | x | 488 | 13 | NO | 12 | 4 | 32 | 19 | 21 | 45 | 0 | 0 | | |
| 308 | | | Mymensingh Sadar | 456152 | v | v | v | v | v | 10 | 10 | 10 | 10 | 10 | 10 | 10 | 10 | 10 | 10 | 10 | 10 | 10 | 100 | 5 | v | 1 | 1 | YES | 57 | 59 | 69 | 56 | 79 | 100 | 110 | 50 | | |
| 309 | | | Nandail | 456172 | v | v | v | v | v | 10 | 10 | 10 | 10 | 10 | 10 | 10 | 10 | 10 | 10 | 10 | 10 | 100 | 5 | v | 1 | 1 | YES | 29 | 79 | 88 | 86 | 80 | 100 | 230 | 50 | | | |
| 310 | | | Phulpur | 456181 | v | v | v | v | v | 10 | 10 | 10 | 8 | 10 | 10 | 10 | 10 | 10 | 10 | 10 | 10 | 10 | 98 | 5 | v | 88 | 9 | YES | 39 | 9 | 32 | 85 | 84 | 98 | 130 | 40 | | |
| 311 | | | Tarakanda | 456188 | v | v | v | v | v | 10 | 10 | 10 | 10 | 10 | 10 | 10 | 10 | 10 | 10 | 10 | 10 | 100 | 5 | v | 1 | 1 | YES | 19 | 11 | 24 | 24 | 84 | 100 | 60 | 50 | | | |
| 312 | | | Trishal | 456194 | v | v | v | v | v | 10 | 10 | 10 | 10 | 10 | 10 | 10 | 10 | 10 | 10 | 10 | 100 | 5 | v | 1 | 1 | YES | 33 | 69 | 57 | 80 | 89 | 100 | 230 | 50 | | | | |
| 313 | | Atpara | 457204 | v | v | v | v | v | 10 | 10 | 10 | 10 | 10 | 10 | 10 | 10 | 10 | 10 | 10 | 100 | 5 | v | 1 | 1 | YES | 19 | 71 | 45 | 10 | 18 | 100 | 0 | 50 | | | | | |
| 314 | | Barhatta | 457209 | v | v | v | v | v | 10 | 10 | 10 | 10 | 10 | 10 | 10 | 10 | 8 | 10 | 10 | 98 | 5 | v | 88 | 3 | YES | 20 | 57 | 9 | 9 | 44 | 98 | 0 | 40 | | | | | |
| 315 | | Durgapur | 457218 | v | v | v | v | v | 10 | 10 | 8 | 5 | 10 | 0 | 0 | 4 | 10 | 10 | 10 | 67 | 5 | v | 461 | 9 | YES | 14 | 56 | 85 | 24 | 61 | 67 | 150 | 40 | | | | | |
| 316 | | Kalmakanda | 457240 | v | v | v | v | v | 10 | 10 | 10 | 8 | 6 | 10 | 10 | 6 | 10 | 10 | 10 | 90 | 5 | v | 240 | 6 | YES | 7 | 6 | 0 | 39 | 82 | 90 | 60 | 40 | | | | | |
| 317 | | Kendua | 457247 | v | v | v | v | v | 10 | 10 | 10 | 10 | 10 | 10 | 10 | 10 | 10 | 10 | 100 | 5 | v | 1 | 1 | YES | 45 | 77 | 90 | 70 | 40 | 100 | 250 | 50 | | | | | | |
| 318 | | Khalajuri | 457238 | x | v | v | v | v | 0 | 8 | 6 | 10 | 8 | 4 | 10 | 10 | 10 | 10 | 76 | 4 | x | 410 | 7 | NO | 0 | 30 | 0 | 12 | 60 | 76 | 50 | 0 | | | | | | |
| 319 | | Madan | 457256 | x | v | v | x | v | 0 | 3 | 10 | 10 | 0 | 0 | 0 | 10 | 10 | 10 | 53 | 3 | x | 485 | 10 | NO | 19 | 44 | 7 | 25 | 32 | 53 | 0 | 0 | | | | | | |
| 320 | | Mohanganj | 457263 | v | v | v | v | v | 10 | 10 | 8 | 10 | 10 | 10 | 10 | 8 | 10 | 10 | 96 | 5 | v | 152 | 5 | YES | 5 | 54 | 55 | 59 | 64 | 96 | 200 | 40 | | | | | | |
| 321 | | Netrokona Sadar | 457274 | v | v | v | v | v | 10 | 10 | 10 | 10 | 10 | 10 | 10 | 7 | 10 | 10 | 10 | 97 | 5 | v | 148 | 4 | YES | 34 | 62 | 77 | 49 | 74 | 97 | 50 | 40 | | | | | |
| 322 | | Purbadhala | 457283 | v | v | v | v | v | 10 | 10 | 10 | 10 | 10 | 0 | 0 | 6 | 10 | 10 | 76 | 5 | v | 410 | 7 | YES | 17 | 44 | 23 | 0 | 38 | 76 | 0 | 40 | | | | | | |
| 323 | | Jhenaigati | 458937 | v | v | v | v | v | 10 | 10 | 10 | 10 | 10 | 10 | 10 | 10 | 10 | 10 | 100 | 5 | v | 1 | 1 | YES | 19 | 36 | 16 | 29 | 80 | 100 | 60 | 50 | | | | | | |
| 324 | | Nakla | 458967 | v | v | v | v | v | 10 | 10 | 6 | 10 | 10 | 2 | 10 | 10 | 10 | 10 | 88 | 5 | v | 284 | 4 | YES | 25 | 33 | 5 | 26 | 30 | 88 | 50 | 40 | | | | | | |
| 325 | | Nalitabari | 458970 | v | v | v | v | v | 10 | 10 | 10 | 10 | 10 | 10 | 10 | 7 | 10 | 10 | 97 | 5 | v | 148 | 3 | YES | 32 | 25 | 11 | 7 | 43 | 97 | 50 | 40 | | | | | | |
| 326 | | Sherpur Sadar | 458988 | v | v | v | v | v | 10 | 10 | 10 | 0 | 8 | 0 | 0 | 6 | 10 | 10 | 64 | 5 | v | 471 | 5 | YES | 46 | 56 | 0 | 89 | 64 | 64 | 220 | 40 | | | | | | |
| 327 | | Sreebardi | 458990 | v | v | v | v | v | 10 | 10 | 10 | 10 | 10 | 10 | 10 | 8 | 10 | 10 | 98 | 5 | v | 88 | 2 | YES | 13 | 58 | 36 | 57 | 76 | 98 | 150 | 40 | | | | | | |
| 328 | | Adamdighi | 501006 | v | v | v | v | v | 10 | 10 | 10 | 10 | 6 | 10 | 10 | 10 | 10 | 10 | 96 | 5 | v | 152 | 2 | YES | 44 | 51 | 61 | 75 | 75 | 96 | 160 | 40 | | | | | | |
| 329 | | Bogura Sadar | 501020 | v | v | v | v | v | 10 | 10 | 8 | 10 | 10 | 10 | 0 | 10 | 10 | 10 | 88 | 5 | v | 284 | 8 | YES | 20 | 28 | 45 | 23 | 74 | 88 | 150 | 40 | | | | | | |
| 330 | | Dhunat | 501027 | v | v | v | v | v | 10 | 10 | 10 | 10 | 10 | 0 | 0 | 6 | 10 | 10 | 76 | 5 | v | 410 | 11 | YES | 11 | 35 | 30 | 33 | 61 | 76 | 100 | 40 | | | | | | |
| 331 | | Dhupchanchia | 501033 | v | v | v | v | v | 10 | 10 | 10 | 10 | 2 | 10 | 10 | 10 | 10 | 10 | 92 | 5 | v | 217 | 4 | YES | 26 | 41 | 52 | 44 | 85 | 92 | 70 | 40 | | | | | | |
| 332 | | Gabtail | 501040 | v | v | v | v | v | 10 | 5 | 10 | 10 | 10 | 10 | 0 | 8 | 10 | 10 | 83 | 5 | v | 348 | 9 | YES | 29 | 22 | 25 | 0 | 63 | 83 | 50 | 40 | | | | | | |
| 333 | | Kahaloo | 501054 | v | v | v | v | v | 10 | 10 | 10 | 10 | 10 | 0 | 10 | 10 | 10 | 10 | 90 | 5 | v | 240 | 5 | YES | 36 | 70 | 77 | 82 | 87 | 90 | 230 | 40 | | | | | | |
| 334 | | Nandigram | 501067 | v | v | v | v | v | 10 | 10 | 10 | 10 | 10 | 10 | 0 | 10 | 10 | 10 | 90 | 5 | v | 240 | 5 | YES | 19 | 21 | 46 | 35 | 65 | 90 | 150 | 40 | | | | | | |
| 335 | | Sariakandi | 501081 | v | v | v | v | v | 10 | 10 | 10 | 10 | 6 | 10 | 10 | 10 | 10 | 10 | 96 | 5 | v | 152 | 2 | YES | 41 | 37 | 40 | 23 | 87 | 96 | 70 | 40 | | | | | | |
| 336 | | Shajahanpur | 501085 | v | v | v | v | v | 10 | 10 | 10 | 10 | 10 | 10 | 10 | 10 | 10 | 100 | 5 | v | 1 | 1 | YES | 43 | 58 | 65 | 81 | 76 | 100 | 160 | 50 | | | | | | | |
| 337 | Sherpur | 501088 | v | v | v | v | v | 10 | 10 | 10 | 10 | 10 | 10 | 0 | 10 | 10 | 10 | 90 | 5 | v | 240 | 5 | YES | 34 | 23 | 53 | 75 | 73 | 90 | 110 | 40 | | | | | | | |
| 338 | Shibganj | 501094 | v | v | v | v | v | 10 | 5 | 10 | 10 | 10 | 8 | 0 | 8 | 10 | 10 | 81 | 5 | v | 372 | 10 | YES | 18 | 32 | 67 | 63 | 70 | 81 | 150 | 40 | | | | | | | |
| 339 | Sonatola | 501095 | v | v | v | v | v | 10 | 8 | 10 | 3 | 10 | 10 | 0 | 3 | 10 | 10 | 74 | 5 | v | 425 | 12 | YES | 29 | 71 | 73 | 72 | 87 | 74 | 280 | 40 | | | | | | | |
| 340 | Bholahat | 507018 | v | v | v | v | v | 10 | 10 | 10 | 10 | 10 | 10 | 10 | 6 | 10 | 10 | 96 | 5 | v | 152 | 5 | YES | 58 | 67 | 78 | 82 | 91 | 96 | 280 | 40 | | | | | | | |
| 341 | Chapainawabganj Sadar | 507066 | v | v | v | v | v | 10 | 10 | 8 | 10 | 10 | 10 | 10 | 10 | 10 | 10 | 98 | 5 | v | 88 | 1 | YES | 63 | 44 | 81 | 87 | 86 | 98 | 190 | 40 | | | | | | | |
| 342 | Gomostapur | 507037 | v | v | v | v | v | 10 | 10 | 10 | 10 | 10 | 10 | 10 | 7 | 10 | 10 | 97 | 5 | v | 148 | 4 | YES | 28 | 61 | 61 | 83 | 92 | 97 | 130 | 40 | | | | | | | |
| 343 | Nachole | 507056 | v | v | v | v | v | 10 | 10 | 8 | 10 | 10 | 10 | 10 | 10 | 10 | 10 | 98 | 5 | v | 88 | 1 | YES | 65 | 62 | 67 | 42 | 84 | 98 | 260 | 40 | | | | | | | |
| 344 | Shibganj | 507088 | v | v | v | v | v | 10 | 10 | 8 | 10 | 10 | 10 | 10 | 10 | 10 | 10 | 98 | 5 | v | 88 | 1 | YES | 29 | 30 | 33 | 52 | 76 | 98 | 100 | 40 | | | | | | | |

Table 8: Results of 6th Performance Assessment of UGDP

| Selected for 6th Round | | Not Selected for 6th Round and Not Selected for Rounds 1 to 5 in the Total Score Columns | | | | | | | | | | | | | | 1 Lac = 100,000 | | | | | | | | | | | | | | | | | | | |
|------------------------|----------|--|-----------------|--------|--|--------------------------------------|-------------------------------------|----------------------------------|--------------------------|--|--|--|---|--------------------------|--|---|---|--|--|--------------------------------|------------------------|--|-----------------|------------------|---|-----------------------|-----------------------|-----------------------|-----------------------|-----------------------|-----------------------|---|------------------------------------|-----|----|
| SL | Division | District | Upazila | Code | Precondition Indicators | | | | | Performance Indicators (Each Indicator 10 Marks) | | | | | | | | Summary of PA 6 Results | | | | | 6 Years Scores | | | | | PBA Allocation | | | | | | | |
| | | | | | (v) Passed, (x) Not Passed | | | | | Institutional Capacity | | Financial Management Capacity | | | Planning Capacity | | | Transparency and Accountability | | Obtained Score Total Score 100 | Counting Preconditions | Precondition Passed (V) / Not Passed (X) | Rank-Nationwide | Rank in District | Selected as 6th Round Upazilas (Yes/No) | Total Score in 1st PA | Total Score in 2nd PA | Total Score in 3rd PA | Total Score in 4th PA | Total Score in 5th PA | Total Score in 6th PA | Total amount of PBA Round 1 to 5 (BDT in Lac) | Amount of PBA Round 6 (BDT in Lac) | | |
| | | | | | Upazila Parishad (UZP) meetings held regularly | Upazila Committees (UCs) functioning | Annual Budget prepared and approved | Annual Development Plan Prepared | ADP reports are prepared | Upazila Parishad Meetings are held and recorded | Upazila Committees (UCs) meeting are held and recorded | Annual Budget is prepared and approved as stated in UZP Act. | Asset register is properly maintained & updated | ADP reports are prepared | Annual Financial Statement is prepared | Five-Year Development Plan (FYP) with relevant contents | Annual Development Plan (AP) with relevant contents | Information Focal Point (IFP) assigned | Citizen Charter published and publicized | | | | | | | | | | | | | | | | |
| 1 | 2 | 3 | 4 | 5 | 1.1 | 1.2 | 2.1 | 2.2 | 2.3 | 2.4 | 3.1 | 3.2 | 4.1 | 4.2 | | | | | | | | | | | | | | | | | | | | | |
| 376 | | Rajshahi | Sujanagar | 507683 | v | v | v | v | v | 10 | 10 | 10 | 10 | 10 | 10 | 5 | 6 | 10 | 10 | 10 | 10 | 91 | 5 | v | 232 | 1 | YES | 55 | 82 | 88 | 73 | 88 | 91 | 280 | 40 |
| 377 | | Rajshahi | Bagha | 508110 | v | v | v | v | v | 10 | 10 | 10 | 10 | 10 | 10 | 0 | 10 | 10 | 10 | 10 | 10 | 90 | 5 | v | 240 | 7 | YES | 39 | 38 | 93 | 54 | 73 | 90 | 150 | 40 |
| 378 | | Rajshahi | Baghmara | 508112 | v | v | v | v | v | 10 | 10 | 6 | 3 | 6 | 8 | 10 | 8 | 10 | 10 | 10 | 81 | 5 | v | 372 | 8 | YES | 24 | 17 | 35 | 56 | 76 | 81 | 50 | 40 | |
| 379 | | Rajshahi | Charghat | 508125 | v | v | v | v | v | 10 | 10 | 10 | 10 | 10 | 10 | 10 | 10 | 10 | 10 | 10 | 100 | 5 | v | 1 | 1 | YES | 61 | 79 | 83 | 67 | 77 | 100 | 250 | 50 | |
| 380 | | Rajshahi | Durgapur | 508131 | v | v | v | v | v | 10 | 10 | 10 | 10 | 10 | 10 | 10 | 10 | 10 | 10 | 10 | 100 | 5 | v | 1 | 1 | YES | 60 | 79 | 87 | 100 | 82 | 100 | 280 | 50 | |
| 381 | | Rajshahi | Godagari | 508134 | v | v | v | v | v | 10 | 10 | 10 | 10 | 10 | 10 | 10 | 10 | 10 | 10 | 10 | 100 | 5 | v | 1 | 1 | YES | 46 | 47 | 96 | 84 | 94 | 100 | 180 | 50 | |
| 382 | | Rajshahi | Mohanpur | 508153 | v | v | v | v | v | 10 | 8 | 10 | 10 | 8 | 10 | 10 | 8 | 10 | 10 | 10 | 94 | 5 | v | 188 | 6 | YES | 31 | 32 | 90 | 82 | 85 | 94 | 180 | 40 | |
| 383 | | Rajshahi | Paba | 508172 | v | v | v | v | v | 10 | 10 | 10 | 10 | 10 | 10 | 10 | 10 | 10 | 10 | 10 | 100 | 5 | v | 1 | 1 | YES | 59 | 68 | 72 | 73 | 86 | 100 | 280 | 50 | |
| 384 | | Rajshahi | Puthia | 508182 | v | v | v | v | v | 10 | 10 | 10 | 10 | 10 | 10 | 10 | 10 | 10 | 10 | 10 | 100 | 5 | v | 1 | 1 | YES | 54 | 68 | 82 | 91 | 81 | 100 | 230 | 50 | |
| 385 | | Rajshahi | Tanore | 508194 | v | v | v | v | v | 10 | 10 | 8 | 10 | 10 | 0 | 0 | 8 | 10 | 10 | 10 | 76 | 5 | v | 410 | 9 | YES | 34 | 63 | 72 | 85 | 63 | 76 | 220 | 40 | |
| 386 | | Rajshahi | Belkuchi | 508811 | v | v | v | v | v | 10 | 10 | 10 | 10 | 10 | 10 | 8 | 8 | 10 | 10 | 10 | 96 | 5 | v | 152 | 2 | YES | 64 | 82 | 72 | 75 | 79 | 96 | 270 | 40 | |
| 387 | | Sirajganj | Chauhali | 508827 | v | v | v | v | v | 10 | 10 | 10 | 10 | 10 | 10 | 0 | 8 | 10 | 10 | 10 | 88 | 5 | v | 284 | 7 | YES | 32 | 37 | 38 | 76 | 76 | 88 | 110 | 40 | |
| 388 | | Sirajganj | Kamarkhanda | 508844 | v | v | v | v | v | 10 | 10 | 10 | 10 | 10 | 10 | 10 | 10 | 8 | 10 | 10 | 98 | 5 | v | 88 | 1 | YES | 44 | 61 | 45 | 61 | 78 | 98 | 110 | 40 | |
| 389 | | Sirajganj | Kazipur | 508850 | v | v | v | v | v | 10 | 10 | 10 | 5 | 10 | 10 | 10 | 8 | 10 | 10 | 93 | 5 | v | 204 | 6 | YES | 51 | 79 | 72 | 56 | 72 | 93 | 250 | 40 | | |
| 390 | | Sirajganj | Royganj | 508861 | v | v | v | v | v | 10 | 10 | 10 | 10 | 8 | 10 | 10 | 8 | 10 | 10 | 96 | 5 | v | 152 | 2 | YES | 45 | 63 | 35 | 36 | 84 | 96 | 60 | 40 | | |
| 391 | | Sirajganj | Shahjadpur | 508867 | v | v | v | v | v | 10 | 10 | 10 | 10 | 10 | 10 | 0 | 8 | 10 | 10 | 88 | 5 | v | 284 | 7 | YES | 30 | 15 | 32 | 48 | 71 | 88 | 100 | 40 | | |
| 392 | | Sirajganj | Sirajganj Sadar | 508878 | v | v | v | v | v | 10 | 10 | 10 | 10 | 8 | 10 | 10 | 8 | 10 | 10 | 96 | 5 | v | 152 | 2 | YES | 41 | 82 | 84 | 80 | 83 | 96 | 220 | 40 | | |
| 393 | | Sirajganj | Tarash | 508889 | v | v | v | v | v | 10 | 10 | 10 | 10 | 10 | 10 | 0 | 8 | 10 | 10 | 88 | 5 | v | 284 | 7 | YES | 41 | 71 | 71 | 87 | 63 | 88 | 170 | 40 | | |
| 394 | | Sirajganj | Ullahpara | 508894 | v | v | v | v | v | 10 | 10 | 8 | 10 | 8 | 10 | 10 | 10 | 10 | 10 | 96 | 5 | v | 152 | 2 | YES | 56 | 79 | 89 | 90 | 89 | 96 | 240 | 40 | | |
| 395 | | Dinajpur | Biral | 552717 | v | v | v | v | v | 10 | 10 | 4 | 10 | 10 | 10 | 10 | 6 | 10 | 10 | 90 | 5 | v | 240 | 6 | YES | 32 | 72 | 60 | 68 | 68 | 90 | 200 | 40 | | |
| 396 | | Dinajpur | Birampur | 552710 | v | v | v | v | v | 10 | 10 | 10 | 10 | 10 | 10 | 0 | 6 | 10 | 10 | 86 | 5 | v | 310 | 7 | YES | 30 | 71 | 60 | 73 | 69 | 86 | 180 | 40 | | |
| 397 | | Dinajpur | Birganj | 552712 | v | v | v | v | v | 10 | 10 | 4 | 5 | 10 | 10 | 0 | 3 | 10 | 10 | 72 | 5 | v | 441 | 11 | YES | 32 | 47 | 31 | 53 | 86 | 72 | 120 | 40 | | |
| 398 | | Dinajpur | Bochaganj | 552721 | v | v | v | v | v | 10 | 10 | 10 | 10 | 10 | 10 | 10 | 10 | 10 | 10 | 100 | 5 | v | 1 | 1 | YES | 25 | 53 | 49 | 20 | 67 | 100 | 50 | 50 | | |
| 399 | | Dinajpur | Chirirbandar | 552730 | v | v | v | v | v | 10 | 10 | 8 | 10 | 10 | 0 | 8 | 8 | 10 | 10 | 84 | 5 | v | 335 | 8 | YES | 11 | 63 | 39 | 70 | 72 | 84 | 150 | 40 | | |
| 400 | | Dinajpur | Dinajpur Sadar | 552764 | v | v | v | v | v | 10 | 10 | 10 | 10 | 8 | 10 | 10 | 3 | 10 | 10 | 91 | 5 | v | 232 | 3 | YES | 21 | 36 | 92 | 46 | 60 | 91 | 150 | 40 | | |
| 401 | | Dinajpur | Fulbari | 552738 | v | v | v | v | v | 10 | 10 | 10 | 5 | 8 | 10 | 0 | 8 | 10 | 10 | 81 | 5 | v | 372 | 10 | YES | 19 | 68 | 71 | 70 | 72 | 81 | 200 | 40 | | |
| 402 | | Dinajpur | Ghoraghat | 552743 | v | v | v | v | v | 10 | 10 | 10 | 10 | 10 | 10 | 0 | 4 | 10 | 10 | 84 | 5 | v | 335 | 8 | YES | 51 | 73 | 70 | 50 | 63 | 84 | 250 | 40 | | |
| 403 | | Dinajpur | Hakimpur | 552747 | v | v | v | v | v | 10 | 10 | 8 | 10 | 10 | 10 | 10 | 3 | 10 | 10 | 91 | 5 | v | 232 | 3 | YES | 38 | 63 | 93 | 69 | 81 | 91 | 210 | 40 | | |
| 404 | | Dinajpur | Kaharole | 552756 | v | v | v | v | v | 10 | 10 | 10 | 10 | 10 | 10 | 10 | 3 | 10 | 10 | 93 | 5 | v | 204 | 2 | YES | 23 | 29 | 30 | 30 | 42 | 93 | 50 | 40 | | |
| 405 | | Dinajpur | Khansama | 552760 | v | v | v | v | v | 10 | 10 | 10 | 8 | 6 | 2 | 0 | 3 | 10 | 10 | 69 | 5 | v | 454 | 12 | YES | 9 | 78 | 60 | 61 | 72 | 69 | 200 | 40 | | |
| 406 | | Dinajpur | Nawabganj | 552769 | x | v | v | x | v | 7 | 5 | 10 | 5 | 10 | 0 | 0 | 0 | 10 | 10 | 57 | 3 | x | 482 | 13 | NO | 15 | 68 | 37 | 57 | 83 | 57 | 110 | 0 | | |
| 407 | | Dinajpur | Parbatipur | 552777 | v | v | v | v | v | 10 | 10 | 10 | 3 | 10 | 10 | 10 | 10 | 8 | 10 | 10 | 91 | 5 | v | 232 | 3 | YES | 43 | 72 | 51 | 61 | 86 | 91 | 220 | 40 | |
| 408 | | Dinajpur | Fulchhari | 553221 | v | v | v | v | v | 10 | 10 | 8 | 10 | 10 | 4 | 0 | 4 | 10 | 10 | 76 | 5 | v | 410 | 6 | YES | 16 | 10 | 18 | 29 | 35 | 76 | 50 | 40 | | |
| 409 | | Dinajpur | Gaibandha Sadar | 553224 | v | v | v | v | v | 10 | 10 | 10 | 10 | 10 | 10 | 10 | 10 | 10 | 100 | 5 | v | 1 | 1 | YES | 64 | 59 | 80 | 65 | 55 | 100 | 250 | 50 | | | |
| 410 | | Dinajpur | Gobindaganj | 553230 | v | v | v | v | v | 10 | 10 | 10 | 10 | 10 | 8 | 0 | 4 | 10 | 10 | 82 | 5 | v | 363 | 4 | YES | 21 | 23 | 20 | 72 | 78 | 82 | 120 | 40 | | |
| 411 | | Dinajpur | Palashbari | 553267 | v | v | v | v | v | 10 | 10 | 8 | 10 | 10 | 10 | 0 | 4 | 10 | 10 | 82 | 5 | v | 363 | 4 | YES | 14 | 31 | 31 | 32 | 69 | 82 | 50 | 40 | | |
| 412 | | Dinajpur | Sadullapur | 553282 | v | v | v | v | v | 10 | 10 | 10 | 10 | 10 | 10 | 10 | 10 | 10 | 10 | 100 | 5 | v | 1 | 1 | YES | 20 | 43 | 33 | 17 | 79 | 100 | 60 | 50 | | |
| 413 | | Dinajpur | Saghata | 553288 | v | v | v | v | v | 10 | 10 | 10 | 10 | 8 | 10 | 10 | 4 | 10 | 10 | 92 | 5 | v | 217 | 3 | YES | 43 | 52 | 85 | 83 | 62 | 92 | 210 | 40 | | |
| 414 | | Dinajpur | Sundarganj | 553291 | v | v | v | v | v | 10 | 8 | 10 | 8 | 10 | 0 | 0 | 4 | 10 | 10 | 70 | 5 | v | 453 | 7 | YES | 12 | 27 | 20 | 21 | 64 | 70 | 50 | 40 | | |
| 415 | | Dinajpur | Bhurungamari | 554906 | v | v | v | v | v | 10 | 10 | 10 | 10 | 10 | 10 | 3 | 3 | 10 | 10 | 86 | 5 | v | 310 | 5 | YES | 29 | 37 | 41 | 51 | 80 | 86 | 60 | 40 | | |
| 416 | | Dinajpur | Char Rajibpur | 554908 | v | v | v | v | v | 10 | 8 | 8 | 3 | 10 | 10 | 10 | 10 | 10 | 10 | 89 | 5 | v | 278 | 4 | YES | 28 | 16 | 30 | 28 | 59 | 89 | 0 | 40 | | |
| 417 | | Dinajpur | Chilmari | 554909 | v | v | v | v | v | 10 | 3 | 6 | 10 | 10 | 0 | 0 | 3 | 0 | 10 | 52 | 5 | v | 487 | 9 | YES | 20 | 14 | 29 | 27 | 14 | 52 | 0 | 40 | | |
| 418 | | Dinajpur | Kurigram Sadar | 554952 | v | v | v | v | v | 10 | 5 | 10 | 10 | 10 | 10 | 10 | 10 | 10 | 95 | 5 | v | 180 | 3 | YES | 36 | 41 | 33 | 59 | 76 | 95 | 100 | 40 | | | |
| 419 | | Dinajpur | Nageshwari | 554961 | v | v | v | v | v | 10 | 10 | 10 | 10 | 10 | 10 | 10 | 8 | 10 | 10 | 98 | 5 | v | 88 | 1 | YES | 56 | 50 | 59 | 65 | 80 | 98 | 260 | 40 | | |
| 420 | | Dinajpur | Phulbari | 554918 | v | v | v | v | v | 10 | 10 | 10 | 10 | 10 | 10 | 10 | 8 | 10 | 10 | 98 | 5 | v | 88 | 1 | YES | 17 | 28 | 14 | 14 | 75 | 98 | 50 | 40 | | |
| 421 | | Dinajpur | Rajarhat | 554977 | v | v | v | v | v | 10 | 8 | 10 | 5 | 10 | 0 | 0 | 3 | 10 | 10 | 66 | 5 | v | 464 | 7 | YES | 18 | 22 | 47 | 75 | 82 | 66 | 170 | 40 | | |
| 422 | | Dinajpur | Raumari | 554979 | v | v | v | v | v | 10 | 3 | 10 | 8 | 8 | 0 | 10 | 3 | 10 | 10 | 72 | 5 | v | 441 | 6 | YES | 21 | 30 | 23 | 19 | 68 | 72 | 50 | 40 | | |
| 423 | | Dinajpur | Ulipur | 554994 | v | v | v | v | v | 10 | 5 | 10 | 10 | 8 | 0 | 0 | 3 | 10 | 10 | 66 | 5 | v | 464 | 7 | YES | 36 | 35 | 34 | 41 | 65 | 66 | 50 | 40 | | |
| 424 | | Dinajpur | Aditmari | 555202 | v | v | v | | | | | | | | | | | | | | | | | | | | | | | | | | | | |

Table 8: Results of 6th Performance Assessment of UGDP

| | | Selected for 6th Round | | | | | | | | | | Not Selected for 6th Round and Not Selected for Rounds 1 to 5 in the Total Score Columns | | | | | | | | | | 1 Lac = 100,000 | | | | | | | | | | | | | | |
|-----|----------|------------------------|------------------|-------------------|----------------------------|---|---|---|----|--|-----|--|-----|-----|-------------------|-----|---------------------------------|-----|-----|--------------------------------|------------------------|--|-----------------|------------------|---|-----------------------|-----------------------|-----------------------|-----------------------|-----------------------|-----------------------|---|------------------------------------|-----|-----|----|
| SL | Division | District | Upazila | Code | Precondition Indicators | | | | | Performance Indicators (Each Indicator 10 Marks) | | | | | | | | | | Summary of PA 6 Results | | | | | 6 Years Scores | | | | | PBA Allocation | | | | | | |
| | | | | | (v) Passed, (x) Not Passed | | | | | Institutional Capacity | | Financial Management Capacity | | | Planning Capacity | | Transparency and Accountability | | | Obtained Score Total Score 100 | Counting Preconditions | Precondition Passed (V) / Not Passed (X) | Rank-Nationwide | Rank in District | Selected as 6th Round Upazilas (Yes/No) | Total Score in 1st PA | Total Score in 2nd PA | Total Score in 3rd PA | Total Score in 4th PA | Total Score in 5th PA | Total Score in 6th PA | Total amount of PBA Round 1 to 5 (BDT in Lac) | Amount of PBA Round 6 (BDT in Lac) | | | |
| | | | | | 1 | 2 | 3 | 4 | 5 | 1.1 | 1.2 | 2.1 | 2.2 | 2.3 | 2.4 | 3.1 | 3.2 | 4.1 | 4.2 | | | | | | | | | | | | | | | | | |
| 451 | Sylhet | Tha | Ranisankail | 559486 | v | v | v | v | v | 10 | 10 | 8 | 10 | 10 | 2 | 10 | 10 | 10 | 10 | 10 | 90 | 5 | v | 240 | 5 | YES | 18 | 70 | 87 | 61 | 60 | 90 | 200 | 40 | | |
| 452 | | | Thakurgaon Sadar | 559494 | v | v | v | v | v | 10 | 10 | 10 | 10 | 10 | 10 | 10 | 10 | 10 | 10 | 10 | 10 | 100 | 5 | v | 1 | 1 | YES | 31 | 41 | 45 | 21 | 79 | 100 | 60 | 50 | |
| 453 | | Habiganj | Ajmiriganj | 603602 | v | v | v | v | v | 10 | 5 | 10 | 10 | 8 | 0 | 6 | 10 | 10 | 10 | 10 | 10 | 69 | 5 | v | 454 | 8 | YES | 8 | 66 | 73 | 55 | 49 | 69 | 200 | 40 | |
| 454 | | | Bahubal | 603605 | v | v | v | v | v | 10 | 5 | 6 | 10 | 10 | 10 | 0 | 10 | 10 | 10 | 10 | 10 | 81 | 5 | v | 372 | 4 | YES | 60 | 77 | 92 | 68 | 68 | 81 | 250 | 40 | |
| 455 | | | Baniyachong | 603611 | v | v | v | v | v | 10 | 10 | 10 | 10 | 8 | 10 | 10 | 6 | 10 | 10 | 10 | 10 | 94 | 5 | v | 188 | 1 | YES | 27 | 50 | 53 | 36 | 79 | 94 | 110 | 40 | |
| 456 | | | Chunarughat | 603626 | v | v | v | v | v | 10 | 5 | 10 | 10 | 10 | 10 | 10 | 8 | 10 | 10 | 10 | 10 | 93 | 5 | v | 204 | 2 | YES | 35 | 70 | 72 | 73 | 70 | 93 | 210 | 40 | |
| 457 | | | Habiganj Sadar | 603644 | v | v | v | v | v | 10 | 5 | 10 | 10 | 10 | 0 | 6 | 0 | 10 | 10 | 10 | 10 | 61 | 5 | v | 477 | 9 | YES | 28 | 61 | 27 | 42 | 65 | 61 | 100 | 40 | |
| 458 | | | Lakhai | 603668 | v | v | v | v | v | 10 | 8 | 10 | 5 | 8 | 10 | 0 | 6 | 10 | 10 | 10 | 10 | 77 | 5 | v | 402 | 6 | YES | 45 | 66 | 88 | 85 | 68 | 77 | 170 | 40 | |
| 459 | | | Madhabpur | 603671 | v | v | v | v | v | 10 | 5 | 10 | 10 | 8 | 0 | 10 | 8 | 10 | 10 | 10 | 10 | 81 | 5 | v | 372 | 4 | YES | 27 | 76 | 36 | 81 | 52 | 81 | 160 | 40 | |
| 460 | | | Nabiganj | 603677 | v | v | v | v | v | 10 | 10 | 4 | 10 | 10 | 8 | 10 | 10 | 10 | 10 | 10 | 10 | 92 | 5 | v | 217 | 3 | YES | 8 | 52 | 40 | 38 | 74 | 92 | 150 | 40 | |
| 461 | | | Shaistaganj | 603687 | v | v | v | v | v | 10 | 3 | 4 | 5 | 10 | 10 | 0 | 10 | 10 | 10 | 10 | 10 | 72 | 5 | v | 441 | 7 | YES | | | 11 | 28 | 26 | 72 | 50 | 40 | |
| 462 | | | Moulvibazar | Borolekha | 605814 | v | v | v | v | v | 10 | 10 | 8 | 10 | 10 | 0 | 10 | 10 | 10 | 10 | 10 | 10 | 88 | 5 | v | 284 | 1 | YES | 42 | 43 | 78 | 80 | 81 | 88 | 170 | 40 |
| 463 | | Juri | | 605835 | v | v | v | v | v | 10 | 10 | 8 | 10 | 6 | 0 | 8 | 10 | 10 | 10 | 10 | 10 | 72 | 5 | v | 441 | 6 | YES | 29 | 20 | 46 | 61 | 78 | 72 | 160 | 40 | |
| 464 | | Kamaliganj | | 605856 | v | v | v | v | v | 10 | 10 | 6 | 10 | 10 | 10 | 0 | 8 | 10 | 10 | 10 | 10 | 84 | 5 | v | 335 | 3 | YES | 51 | 61 | 79 | 89 | 77 | 84 | 270 | 40 | |
| 465 | | Kulaura | | 605865 | v | v | v | v | v | 10 | 10 | 10 | 10 | 10 | 8 | 0 | 8 | 10 | 10 | 10 | 10 | 86 | 5 | v | 310 | 2 | YES | 25 | 38 | 34 | 58 | 63 | 86 | 150 | 40 | |
| 466 | | Moulvibazar Sadar | | 605874 | v | v | v | v | v | 10 | 10 | 8 | 10 | 8 | 0 | 10 | 10 | 10 | 10 | 10 | 10 | 76 | 5 | v | 410 | 5 | YES | 47 | 61 | 62 | 68 | 81 | 76 | 260 | 40 | |
| 467 | | Rajnagar | | 605880 | v | v | v | v | v | 10 | 10 | 8 | 10 | 10 | 8 | 0 | 8 | 10 | 10 | 10 | 10 | 84 | 5 | v | 335 | 3 | YES | 31 | 51 | 42 | 60 | 81 | 84 | 160 | 40 | |
| 468 | | Sreemangal | | 605883 | v | v | v | v | v | 10 | 5 | 4 | 10 | 10 | 4 | 0 | 8 | 10 | 10 | 10 | 10 | 71 | 5 | v | 451 | 7 | YES | 36 | 62 | 46 | 70 | 70 | 71 | 150 | 40 | |
| 469 | | Bishwamvarpur | | 609018 | v | v | v | v | v | 10 | 10 | 10 | 8 | 10 | 10 | 10 | 10 | 10 | 10 | 10 | 10 | 98 | 5 | v | 88 | 1 | YES | 62 | 64 | 53 | 34 | 65 | 98 | 150 | 40 | |
| 470 | | Sunamganj | | Chhatak | 609023 | v | v | v | v | v | 10 | 5 | 10 | 8 | 10 | 8 | 8 | 8 | 10 | 10 | 10 | 10 | 87 | 5 | v | 308 | 4 | YES | 24 | 47 | 45 | 50 | 62 | 87 | 50 | 40 |
| 471 | | | | Dakshin Sunamganj | 609027 | v | v | v | v | v | 10 | 10 | 10 | 10 | 10 | 10 | 10 | 4 | 10 | 10 | 10 | 10 | 94 | 5 | v | 188 | 2 | YES | 22 | 22 | 17 | 14 | 49 | 94 | 50 | 40 |
| 472 | | | Derai | 609029 | v | v | v | v | v | 10 | 10 | 10 | 10 | 10 | 10 | 0 | 4 | 10 | 10 | 10 | 10 | 84 | 5 | v | 335 | 6 | YES | 48 | 70 | 86 | 89 | 59 | 84 | 270 | 40 | |
| 473 | | | Dharmapasha | 609032 | v | v | v | v | v | 10 | 8 | 8 | 10 | 8 | 10 | 10 | 8 | 10 | 10 | 10 | 10 | 92 | 5 | v | 217 | 3 | YES | 34 | 79 | 57 | 73 | 63 | 92 | 210 | 40 | |
| 474 | | | Dowarabazar | 609033 | v | v | v | v | v | 10 | 5 | 10 | 10 | 10 | 8 | 0 | 4 | 10 | 10 | 10 | 10 | 77 | 5 | v | 402 | 10 | YES | 40 | 67 | 73 | 63 | 58 | 77 | 200 | 40 | |
| 475 | | | Jagannathpur | 609047 | v | v | v | v | v | 10 | 10 | 10 | 10 | 10 | 10 | 0 | 3 | 10 | 10 | 10 | 10 | 83 | 5 | v | 348 | 7 | YES | 46 | 66 | 65 | 64 | 41 | 83 | 200 | 40 | |
| 476 | | | Jamalganj | 609050 | v | v | v | v | v | 10 | 10 | 10 | 8 | 8 | 10 | 0 | 6 | 10 | 10 | 10 | 10 | 82 | 5 | v | 363 | 8 | YES | 52 | 45 | 33 | 33 | 54 | 82 | 100 | 40 | |
| 477 | | | Sullah | 609086 | v | v | v | v | v | 10 | 10 | 10 | 10 | 10 | 0 | 0 | 3 | 10 | 10 | 10 | 10 | 73 | 5 | v | 432 | 11 | YES | 38 | 53 | 30 | 58 | 45 | 73 | 0 | 40 | |
| 478 | | | Sunamganj Sadar | 609089 | v | v | v | v | v | 10 | 10 | 10 | 8 | 8 | 10 | 0 | 10 | 10 | 10 | 10 | 10 | 86 | 5 | v | 310 | 5 | YES | 29 | 87 | 71 | 83 | 69 | 86 | 210 | 40 | |
| 479 | | | Tahirpur | 609092 | v | v | v | v | v | 10 | 10 | 8 | 8 | 10 | 0 | 10 | 4 | 10 | 10 | 10 | 10 | 80 | 5 | v | 381 | 9 | YES | 26 | 33 | 26 | 30 | 20 | 80 | 0 | 40 | |
| 480 | | Sylhet | Balaganj | 609108 | v | v | v | v | v | 10 | 10 | 10 | 10 | 10 | 10 | 0 | 10 | 10 | 10 | 10 | 10 | 90 | 5 | v | 240 | 2 | YES | 25 | 20 | 20 | 21 | 75 | 90 | 50 | 40 | |
| 481 | | | Beanibazar | 609117 | v | v | v | v | v | 10 | 10 | 10 | 10 | 8 | 4 | 10 | 6 | 10 | 10 | 10 | 10 | 88 | 5 | v | 284 | 4 | YES | 26 | 39 | 42 | 49 | 68 | 88 | 50 | 40 | |
| 482 | | | Bishwanath | 609120 | v | v | v | v | v | 10 | 10 | 10 | 10 | 10 | 10 | 0 | 8 | 10 | 10 | 10 | 10 | 88 | 5 | v | 284 | 4 | YES | 16 | 34 | 42 | 55 | 54 | 88 | 100 | 40 | |
| 483 | | | Companiganj | 609127 | v | v | v | v | v | 10 | 8 | 8 | 8 | 8 | 2 | 10 | 10 | 10 | 10 | 10 | 10 | 84 | 5 | v | 335 | 8 | YES | 22 | 36 | 33 | 48 | 45 | 84 | 50 | 40 | |
| 484 | | | Dakshin Surma | 609131 | v | v | v | v | v | 10 | 8 | 10 | 0 | 10 | 0 | 10 | 3 | 10 | 10 | 10 | 10 | 71 | 5 | v | 451 | 12 | YES | 10 | 18 | 20 | 27 | 42 | 71 | 50 | 40 | |
| 485 | | | Fenchuganj | 609135 | v | v | v | v | v | 10 | 10 | 10 | 5 | 10 | 10 | 0 | 8 | 0 | 10 | 10 | 10 | 73 | 5 | v | 432 | 11 | YES | 12 | 19 | 25 | 26 | 58 | 73 | 100 | 40 | |
| 486 | | | Golapganj | 609138 | v | v | v | v | v | 10 | 8 | 6 | 10 | 10 | 0 | 10 | 8 | 10 | 10 | 10 | 10 | 82 | 5 | v | 363 | 10 | YES | 8 | 17 | 40 | 28 | 73 | 82 | 50 | 40 | |
| 487 | | | Gowainghat | 609141 | v | v | v | v | v | 10 | 10 | 10 | 0 | 10 | 10 | 10 | 10 | 10 | 10 | 10 | 10 | 90 | 5 | v | 240 | 2 | YES | 45 | 61 | 83 | 70 | 80 | 90 | 260 | 40 | |
| 488 | | | Jaintiapur | 609153 | v | v | v | v | v | 10 | 10 | 10 | 10 | 10 | 2 | 10 | 10 | 10 | 10 | 10 | 10 | 92 | 5 | v | 217 | 1 | YES | 28 | 19 | 31 | 19 | 68 | 92 | 50 | 40 | |
| 489 | | | Kanaighat | 609159 | v | v | v | v | v | 10 | 8 | 10 | 8 | 10 | 0 | 0 | 8 | 10 | 0 | 64 | 5 | v | 471 | 13 | YES | 26 | 47 | 42 | 28 | 61 | 64 | 50 | 40 | | | |
| 490 | | Osmani Nagar | 609190 | v | v | v | v | v | 10 | 10 | 8 | 10 | 10 | 10 | 0 | 10 | 10 | 10 | 10 | 10 | 88 | 5 | v | 284 | 4 | YES | 0 | 1 | 31 | 36 | 73 | 88 | 50 | 40 | | |
| 491 | | Sylhet Sadar | 609162 | v | v | v | v | v | 10 | 8 | 8 | 10 | 10 | 10 | 0 | 8 | 10 | 10 | 10 | 10 | 84 | 5 | v | 335 | 8 | YES | 36 | 34 | 47 | 41 | 64 | 84 | 150 | 40 | | |
| 492 | | Zakiganj | 609194 | v | v | v | v | v | 10 | 8 | 6 | 5 | 10 | 10 | 10 | 8 | 10 | 10 | 10 | 10 | 87 | 5 | v | 308 | 7 | YES | 21 | 37 | 60 | 54 | 67 | 87 | 150 | 40 | | |

Selected for 6th Round
Not Selected for 6th Round

Remarks

Project Management Unit (PMU):

We are delighted to inform our readers that the Upazila Governance and Development Project (UGDP) has successfully completed the online 6th Governance Performance Assessment (PA6) of Upazila Parishads by hiring a third-party firm for maintaining the assessment's quality. The assessment was conducted in 492 Upazilas, with five Preconditions and ten Performance Indicators. We would like to express our sincere gratitude to the Chairmen, Vice Chairmen, Upazila Parishad members, Upazila Nirbahi Officers and other Upazila Officials for their tireless supports in conducting PA6. PA6 was conducted using an online system for the first time in the country while the past five PAs were conducted physically by sending the surveyors. Before conducting the online survey, UGDP developed the online PA system and all Chairmen of Upazila Parishads, UNOs, Assistant Programmers, CAs and UDFs were trained in this process. UGDP conducted this assessment based on official documents uploaded in the Upazila Web Portal.

The Governance Performance Assessment of all Upazila Parishads and Performance-based Allocation (PBA) as development grants are new initiatives for Upazilas introduced by UGDP. As of today, the results of these interventions are very encouraging as steady improvements have been observed. Many governance indicators such as Upazila Meeting, Function of Upazila Committees, Asset Register, Annual Budget, Financial Statement, Annual Development Plan, and Five-year Plan preparation significantly improved though there is still room for further improvement. The large number of sub-projects planned and implemented by Upazilas for both Infrastructure and Capacity Building responding to local needs using PBA of UGDP are considerably contributing to the improvement of Upazilas' service delivery quality and quantity. The study on "Lessons Learned from UGDP" also reveals the positive impacts of PAs and PBA in improvement of Upazila governance & service delivery.

Learnings from UGDP's experiences provide the basis for further improvement of Upazila sub-sector as well as in strengthening of the rural local governance in entire Bangladesh.

JICA Bangladesh Office:

We are pleased to learn the successful completion of the sixth Performance Assessment (PA), which was conducted through the online system for the first time. It should be noted that 479 Upazilas (97.4%) out of 492 Upazilas have fulfilled the preconditions, proving most Upazilas successfully uploaded official documents to Upazila Portal site. At the time of the first PA in 2016, these figures were much lower. The comparison of the first and last PAs indicates a significant improvement in Upazila governance performance. The credit for this great achievement should go to the concerted efforts by all the stakeholders, especially Upazila stakeholders, officials of the Local Government Division (LGD), and UGDP Team.

The next challenge is to sustain and further enhance the improved Upazila governance. Upazila policy reform at the central level is one of the key factors to this end. Regular monitoring of Upazila performance should be institutionalized, and the results should be communicated properly to the public. Institutionalization of Performance Based Approach to the allocation of Upazila ADP should also be considered. We hope that lessons learnt by the experiences and good practices gathered from UGDP will contribute to the government's efforts to further accelerate the process of Upazila policy reforms.

Upazila Governance and Development Project (UGDP)

Local Government Division
Ministry of Local Government, Rural Development & Cooperatives
DPHE Building (Ground Floor), 14 Shaheed Capt. Mansur Ali Sarari, Kakrail, Dhaka-1000, Bangladesh
Phone: + 880 2 55130760, E-mail: info@ugdp-lgd.org, Website: www.ugdp-lgd.org